

Te Rautaki Māori o Kāinga Ora 2021-2026

Te whakatāhuhu me te tautoko i ngā
wawata o ngā Iwi me ngā Rōpū Māori
mō te whāinga whare



Kāinga Ora
Homes and Communities



Te Rautaki Māori o Kāinga Ora 2021-2026

Te whakatāhuhu me te tautoko i ngā wawata o ngā Iwi
me ngā rōpū Māori mō te whāinga whare

TE MATAKITE

He mana i te whenua, he kura kāinga
he whare haumarū, he puna ora
hei oranga tangata

NGĀ UARA

Mana Motuhake Te Mana Māori Motuhake

Te Tiriti o Waitangi Kia horaina he hua pai ake e te hoa kōtui
Māori rāua ko te hoa kōtui Karauna mā ngā whānau

He kura kāinga, he kura whānau Ko te whānau kei te pūtahi

He waka hourua He kōtuitanga tūturu

Kia manawaroa Te manawa titi me te manawa nui

He mana tō te kupu Kia ōrite, kia kakama te tutukitanga

NGĀ WHĀINGA

1. I Kāinga Ora, kua whiwhi katoa a ngāi Māori i tētahi whare haumarū mō rātou, he āhua ngāwari te utu
2. Kia hira, kia kakama hoki te whakarāhinga ake o ō tātou ara whakarato whare mō ngāi Māori
3. He ara nā te Māori i ārahi mō ngā take Māori, me te tautoko mai a te Kāwanatanga

NGĀ WĀHI AROTAHI

Wāhi Arotahi 1

Te whāngai pūtea me te haumi moni:

He whakahāngai anō i te haumitanga ki ngā rongoā
kāinga Māori auaha, mā te Māori e ārahi

- Kia kawea he tatauranga o ngā whenua e wātea ana mō te whakatū whare
- He whakamahi i ngā kōkiri a Kāinga Ora hei tautoko i ngā Iwi me ngā Rōpū Māori kia tomo ki ngā tahuha moni mō te kāinga noho Māori (arā, Te Puni Kōkiri, Te Tūāpapa Kura Kāinga)
- He whakatū, he whakatika hoki i ngā hua/ratonga o nāianeī mō te whakawhanake whenua (tae atu ki te hangaroto me Kāinga Whenua) me ngā tahuha whakawātea whare
- He tautoko i ngā whāinga wāhi mō ngā tauira ahumoni iwi taketake/Māori e piki ake ai te tokomaha o ngā whānau tomo ki te whare mō rātou
- He kōkiri i te ahunga tika, he kauwhau tikanga hoki mō Kāinga Ora kia tukua kētia ana rawa ki ngā kōkiri tautoko i ngā matea kāinga noho Iwi/Māori, tae atu ki te toiora whānau
- He whakaahei, he tautoko i ngā kōkiri whare Māori, arā, papakāinga/wāhi kāinga
- He tautoko i ngā wawata Māori i te ao whakawhanake tāone
- He whakatū anō i te hōtaka nuku whare ki rohe kā

Wāhi Arotahi 2

Te whakapakari pūmanawa:

He whakangungu whiwhinga mahi pai ake, he
whāinga wāhi mahi pai ake hoki

- He tautoko i ngā iwi kia tautoko i ngā wāhanga whakawhanaketanga pūmanawa i roto i te ao kāinga noho me te tautoko i te mahinga (arā, te mātauranga ahumoni, te urutomo ki te whare, ngā tahuha, ngā mōkete me ngā taputapu)
- He whakawātea i ngā ara tūranga mahi, akoranga hoki, tae atu ki ngā piatanga, ngā tūranga whakapiri, me ngā tūranga whakangungu tauhou hei whakapiki i ngā pūmanawa o ngā Iwi me ngā Rōpū Māori
- He whakatū Rōpū Kaitohutohu ki a Kāinga Ora, hei hora tirohanga mai i waho hei tautoko i te whakatinanatanga me te arotakenga o Te Rautaki Māori
- He whakapiki i te āheinga Māori puta noa i Kāinga Ora mō ngā kaimahi, hei whakapiki hoki i te āheinga Māori puta noa i te whakahaere (tae atu ki te kimi tāngata mai i ngā puna iwi hei whakakī i ngā tūranga)
- He whakawhanake auahatanga matihiko mō te whāinga whare me te whakawhiti raraunga mō Kāinga Ora, mō ngā Iwi ngā Rōpū Māori
- Me whakaraupapa ngāi Māori ki mua hei kaiwhāngai, hei kaihoko paetata mā ngā ritenga hoko o Kāinga Ora

Wāhi Arotahi 3

Ngā kōtuitanga:

Me whakapūmau me whakamahana hoki ngā
hononga me ngā kōtuitanga whirinaki

- He tautoko i ngā rautaki o nāianeī he ara hāngai-ki-te-hapori ō rātou (hei tauira, ngā rautaki ā-iwi) me ētahi rautaki ā-hapori tae atu ki ērā i ngā horopaki tuawhenua)
- Kia mārama kē atu, kia whakapaingia hoki te hauora o ō mātou hoa kōtui, me te whanaungatanga ki ngā Iwi me ngā Rōpū Māori
- Me hanga kōtuitanga whakamana i te toiora ā-pāpori, ā-ahurea, ā-ōhanga, ā-taiao, ā-tōrangapū hoki te wāteatanga ki te hunga whai ora, te ōritetanga, te whāinga hua, te whakautu me te whakapono, e tāmaua ana hoki e Te Tiriti o Waitangi
- He tautoko i ngā pūtahi auaha ā-rohe mō ngā rongoā whare, te hoahoa me ngā tauira e arahina ana e ngā iwi, me ngāi Māori
- Me turaki ngā maioro ki te tomo mai, me whakahaere ngā tauārai puta noa i te pūnaha kāinga noho, me te Kāwanatanga

Wāhi Arotahi 4

Te toiora whānau:

Me tautoko ngā whānau Māori i ō rātou whare,
puta noa hoki i te pūnaha kāinga noho

- He tautoko i te toiora me ngā matea o ngā whānau Māori e noho i roto i ngā whare o Kāinga Ora i tēnei wā
- He whakapiki i te wātea mai o ngā ratonga tautoko kounga tiketike mā ngā whānau, me te noho hei hoa kōtui mā ngā kaiwhakarato ratonga pāpori, ina taea
- He tautoko i te nukunuku a ngā whānau Māori mā te pūnaha kāinga noho, kia hoko whare rātou mō rātou anō
- Me tautoko ngā wāhanga whāiti o te pūnaha whare kāore i te mahi mō ngāi Māori, me te mahi pāhekoheko puta noa i ngā hinonga Kāwanatanga hei tautoko i ngā whānau, kia ora rātou (mā te Kaupapa Kōtuitanga MAIHI)
- He whakatū, he whāngai rawa hoki ki tētahi Tira Urupare Hohoro hei tautoko i ngā Iwi me ngā Rōpū Māori, kia pai ake ai te hora mai o ngā āwhina hangarau e tika ana, e ngāwari ake ai te whakawhanake whenua me te hora whare.



Ko te matakite mō Te Rautaki Māori, ina rā

**He mana i te whenua, He kura kāinga
He whare haumarū, He puna ora,
Hei oranga tangata**



Ngā Ūpoko

Me pānui haere tēnei tuhinga i te taha o Te Rautaki Māori o Kāinga Ora 2021 – 2026, Prioritising and supporting Iwi and Rōpū Māori aspirations in housing, i roto i te Whakaputanga Whārangī Kotahi mō te kāinga noho 31.8.21 Kia ngāwari ai te mahi, kua oti te tuhinga kotahi whārangī te roa te hora i te whārangī.

Me tuku ngā pātai katoa ki tekurutao@kaingaora.govt.nz

He Mihi

Piripi Walker – Kaiwhakamāori
Ian Cormack – Kaiwhakamāori
James Molnar – Kaitoi Māori

TE RAUTAKI MĀORI O KĀINGA ORA	
HE MIHI NĀ TE IWI	02
HE MIHI NĀ TE RINGA RAUPĀ O KĀINGA ORA	04
HE WHAKARĀPOPOTONGA	06
HE KUPU WHAKATAKI	07
HE HOROPAKI MATUA	11
NGĀ WĀHANGA O TE RAUTAKI	18
Te Matakite	18
Ngā Uara/Ngā Mātāpono	18
Ngā Whāinga	19
Ngā wāhi arotahi me ngā mahi matua	19
HE HOROPAKI MŌ TE RAUTAKI	24
NGĀ TIKANGA WHAKAHAERE	29
HE RĀRANGI KUPU	30
HE TĀPIRITANGA	31



RUKUTIA

Rukutia te tūāpapa
o te whare nei
rukutia ngā poupou
o te whare nei
rukutia te tāhuhu
o te whare nei.
Whano, whano!
Haramai te toki!
Haumi e! Hui e! Tāiki e!



Tēnei, ka tangi auē ki ngā mate o te tau. Waihoki, me okioki e koutou ki te okiokinga o ngā mātua o tuawhakarere, e kore e hoki ā-tinana mai. Nō reira, moe mārie mai te moe, e au ai te moe e rarau, kāti.

**He mana i te whenua, he kura kāinga
he whare haumaruru, he puna ora, hei oranga tangata.**

Kua riro mā te tirohanga ātea nei e kapo i te āhua o te mahi ngātahi a te kāhui tautoko nāna i whakatū ai te whare nei. E kore e mimiti te puna o te mihi ki te kāhui tautoko, arā, ki ngā māngai ā-iwi me ngā mātanga ā-kāinga i whai wāhi nei ki tēnei kaupapa. Nā Kāinga Ora i whakatakoto te tūāpapa o tō tātou nei whare hei tūnga mō te whare. Nā te kāhui tautoko i whakatū i ngā poupou, tatū atu ki tōna tuanui hei iringa mō ngā kete kōrero. E mihi ana anō hoki ki ngā ringa āwhina katoa i mau ai te whao ki te whakairo whakaaro mō te whare nei.

Heoti, kia kaha, kia māia, kia manawanui ki ngā mahi kei mua i te aroaro tāngata kia piki ake ki tōna taumata e manakohia ai kia puta tātou katoa ki te whei ao ki te ao mārama.

Tihei Mauriora!

NĀ TE RINGA RAUPĀ O KĀINGA ORA

**Whakarongo mai, whakarongo mai
ki te hiringa i kake ai a Tāne nui a rangi
te pupuke hihiri, te pupuke te mahara,
te pupuke te wānanga
ko te wānanga nui o te kore
Matua te pupuke
Matua te hihiri
Matua nuku
Matua rangi
mātūtūā i ā rāua kotahi ki te whai ao,
ki te ao mārama
e Rongo whakairia ake ki runga
turuturu ōwhiti whakamaua kia tīna
Haumi e! Hui e! Tāiki e!**



Kei aku nui, kei aku rahi, kei ngā mana, kei ngā tapu o te motu,
tēnā koutou katoa.

Tēnei rā ko te tārai atu i te waka wairua ki a koutou kua
hūtia te punga o te waka, kua hāpaingia ko te hoe kia tipua
horonuku, kia tipua hororangi. Ko mātau nei te hunga e whai
nei i ngā tapuwae, i ngā taonga tuku iho i waihotia e koutou
kia tū tangata ai, kia tū rangatira ai te iwi Māori i roto i te ao
hurihuri nei. Nā reira koutou rā i te pō, e kī ana te kōrero e oti
te pō, ā, nau mai rā ko te ao.

E pari atu ana ngā tai whakamānawa ki ngā waka tapu, ki
ngā maunga whakahī, ki ngā wai whakaterere taniwha. Arā, ki
ngā māngai o ngā iwi, ki ngā kaikōrero o ngā pūtahi, i whai
wāhi mai ki tā tātou kaupapa, he whare whakamarumarū, he
tangata ora. Tēnei ka mihi ki a koutou i whakangita i ngā hua
ki roto i te kete kōrero, i whakakao mai i ngā whakaaro ki roto
i te kete wānanga kia puta ai tēnei kaupapa whakahirahira
ki te whai ao ki te ao mārama. Ko tōna aronga nui kia
whakatinana i ngā kupu i tākohatia mai rā e ngā mana nui o te
motu hei tāhuhu kōrero mō te kaupapa nei, arā, “He mana i te
whenua, he kura kāinga, he whare haumarū, he puna ora, hei
oranga tangata”.

Nā reira huri noa i te motu, tēnā koutou, tēnā koutou,
tēnā rā tātou katoa.

Nā, Te Ariki Pihama

Ngāti Koroki Kahukura, Ngāti Ruanui, Ngāti Māhanga
Ringa Raupā, Deputy Chief Executive Māori, Kāinga Ora

He whakarāpopotonga

Kua oti ngā kōwae matua o Te Rautaki Māori o Kāinga Ora, e kīa nei ko Te Rautaki Māori o Kāinga Ora 2021 – 2026 Te whakatāhuhu me te tautoko i ngā wawata o ngā Iwi me ngā Rōpū Māori mō te whāinga whare te tārei, i muri i tētahi toronga whakaaro nui ki ngā iwi, ki a ngāi Māori puta noa i te motu, ki ngā mātanga whāinga whare Maori me ngā hinonga kāwanatanga, ā, tēnei mātou te tāpae atu nei i te rautaki i tēnei tuhinga.

Kua tino pāngia ngā mahi tuitui e te mate urutā o COVID-19, ahakoa tērā, he tino whai take, he toro-whānui te toronga whakaaro ake (i tīmata i Whiringa-ā-nuku 2020 – taea noatia a Poutūterangi/Māehe 2021), ā, he maha ngā ara toro whakaaro i whāia. Ko ētahi o ēnei ko tētahi uiuinga whakaroto nā Kāinga Ora, he hui topa tuatahi ki ngā rōpū matua me ētahi hui ā-kanohi ki ngā iwi me ngā whakahaere nui puta noa i te motu.

Ko te matakite mō Te Rautaki Māori, ina rā;

He mana i te whenua, he kura kāinga he whare haumarū, he puna ora, hei oranga tangata.

Inā ngā wāhanga o Te Rautaki Māori o Kāinga Ora:

- **Te Matakite:** te matakite mō mua, e tākina atu ai ngā wawata wā-roa mō te iwi Māori me te whāinga whare;
- **Ngā whanonga pono/ngā mātāpono:** ngā whanonga pono, ka noho hei tūāpapa mō te whāinga i te matakite;
- **Ngā aronga:** ko ngā whāinga ka noho hei tāpae mō ngā hikoinga hei tāpae i ngā hipanga tika kia ahu tika te waka ki te matakite;
- **Ngā wāhanga arotahi:** koinei ngā rohe arotahi matua, e tautohu nei i ngā wāhanga puta noa i te pūnaha kua oti te whakatāhuhu kia whakahoutia ōna āhuatanga taketake, e taea ai te matakite e ngāi Māori;
- **Ngā mahi matua:** me tiketike ngā mahi matua ka whāia kia tutuki ngā whāinga poto, he mea tēnei e kitea ai ka 'pēheatia' ngā mahi. Ka whakawhanaketia atu ngā mahi nei i roto i te wāhanga whakatinana.

He Kupu Whakataki

He Kupu Whakataki nā ngā Heamana Paihere, te Komiti Whāiti mō te Whāinga Whare o te iwi Māori o te Poari o Kāinga Ora

Ka tū pare tokatoka, ka horo pare oneone. E ngā iwi o te motu tēnā koutou katoa.

E tū tahi ana mātou ngā mema o te Komiti Whāiti mō te Whāinga Whare Māori i raro i a Kāinga Ora, ki te tāpae atu i te taha o Te Ringa Raupā, o Te Ariki Pihama, i Te Rautaki Māori o Kāinga Ora 2021 – 2026 Te whakatāhuhu me te tautoko i ngā wawata o ngā Iwi me ngā Rōpū Māori mō te whāinga whare.

He tauawhiawhi ngā tūranga o Kāinga Ora me Te Tūāpapa Kura Kāinga, Ministry of Housing and Urban Development (MHUD) mō te whāinga hua mō te whāinga whare Māori.

He taunaki ngā whāinga o tēnei tuhinga, me te pukapuka MAIHI Ka Ora – National Māori Housing Strategy – he mea āta whakarite ēnei hei whakahāngai ki te Māori and Iwi Housing Innovation (MAIHI) Framework for Action.

Kua whakamahia e mātou te ariā o te waka hourua, hei whakaahua mō Te Rautaki Māori o Kāinga Ora me te Kāinga Ora Organisational Strategy. He rite tonu ngā takere - hei tohu mō te mana ōrite - ki te kore tētahi, e kore tētahi e haere. He tauawhiawhi ngā tuhinga e rua, ā, ko te hononga ko te Anga Putanga Tiri, me te Tauāki Whakamaunga Atu.

Ko tā Te Rautaki Māori o Kāinga Ora he hora tūāpapa pakari mō te whakaahuatanga me te whakatinanatanga o ngā moemoeā o ngāi Māori mō te whāinga whare, ā, he mea pou ki runga i te pou matua o te kōtuitanga. Anei kei raro nei ētahi wāhanga arotahi taketake e whā, me ngā mahi huhua o roto o tēnā, o tēnā. He mea waihanga ēnei mahi nā te tuituinga wawe, whai tikanga hoki, me te mahi kōtui ki ngā mema o te tira, tae atu ki ngā iwi, ki ngā rōpū Māori me ngā hinonga kōtui.

Ko te whakatāhuhu me te tautoko i ngā wawata o ngā Iwi me ngā Rōpū Māori mō te whāinga whare tētahi wāhi taketake o te rautaki. He mea tino hira te whakawhanake me te whakatikatika i ngā hononga pakari ki ngā Iwi me ngā Rōpū Māori, nā te mea, mā konei ka mārama te tangata ki ngā pānga o ngāi Māori, ka tutuki hoki ō rātou hiahia, me ō rātou moemoeā. Mā te mahi pipiri ki ngā Iwi me ngāi Māori ka āhei a Kāinga Ora ki te whakatutuki i āna ake whakaritenga ā-ture e rārangitia mai ana i tō mātou Reta Tūmanako nā te Minita mō ngā Whare, ki te tautoko hoki i te Karauna kia tutuki i a ia ōna herenga i raro i Te Tiriti o Waitangi.

Ko tēnei mea te whare haumarū, hauora, āhua ngāwari te utu tētahi tūāpapa taketake o te hapori taurikura, me te hunga o roto. Ehara i te mea ko ngā mahi kei roto hei hora whare anake ki a ngāi Māori, kāo, ko tētahi atu whāinga kia whakapakaritia ngā Iwi me ngā Rōpū Māori kia whai wāhi ki te hanganga o aua hapori, te waihanga whāinga wāhi hoki mō te whanaketanga ahumoni, whaiaro anō hoki.

Ko tā Te Rautaki Māori o Kāinga Ora he tohu i te ara whakamua hei hanga whāinga wāhi mō ngāi Māori katoa i Kāinga Ora kia whiwhi whare mō rātou, kia whakapikia te huhua o ngā whare e wātea ana, i runga i te kakama, mō ngāi Māori. Tētahi whāinga anō he whakangāwari, he whakaahei i ngā rongoā nā te Māori i ārahi mō ngā take Māori, me te tautoko mai a te Kāwanatanga.

Mā Te Rautaki Māori o Kāinga Ora e tautuhi ngā tohu whakamaunga atu mō te ihu o te waka i roto i te ao kāinga noho Māori, mō ngā tau e rima e tū mai nei. Kua tīmata te mahi whakatinana, nā te otinga o te whakatūranganga o te Māori Advisory Group, nā te whakamahere hoki i ngā mahi matua i roto i te ono marama, me te whakatāhuhutanga o ngā mahi matua wawata.

Kua tautoko te ahurea o te whakahaere i ā tātou putanga o waho, nā reira, kei te whakapakari mātou i ō mātou pūmanawa whakaroto mā te Hōtaka Mātauranga Māori, me ō mātou Whatunga Māori ā-Motu, kia pai ai te whakarato tika a ā mātou kaimahi i te rautaki.

Nō te marama o Hōngongoi/Hūrae i tīmata ai te mahi kauwhau i ngā mahi taumata tiketike, ā, e haere tonu ana ngā mahi whakamahere mō ētahi atu whakaputanga mahi.

He mana i te whenua, he kura kāinga, he whare haumarū, he puna ora, hei oranga tangata.

Nā māua tahi, Ngārimu Blair, Victoria Kingi
He mema nō te Poari, ko ngā Toihau Ōrite o te Komiti Whāiti mō te Kāinga Noho Māori

He tirohanga motuhake mō te kāinga noho Māori¹

Ka ora te tangata i ngā wāhi haumarū, hauora hoki hei nohoanga mō rātou. Ko te take tēnei i hiahia ngā tūpuna Māori ki te heke mai i Hawaiki ki Aotearoa, ā, he pērā anō i 2021, kei te hiahia a ngāi Māori ki tētahi kāinga haumarū, hauora hoki mō rātou².

Kei te 15% ōrau o te taupori a ngāi Māori, engari he rerekē rawa te kite i a rātou puta noa i ngā putanga pāpori: mō te mātauranga, te whiwhinga mahi, te hauora, ā, ka whakareangia ēnei korenga i roto i te ao whiwhinga whare mō ngāi Māori i te tau 2021. I takea mai te āhua o te noho o ngāi Māori i ēnei rā i ngā ture whakataha i te Māori a te kāwanatanga, tae atu ki ana kaupapa here, ki ana takahanga i Te Tiriti o Waitangi, i te wā o te murunga o te ao Māori, te taha ki ana taonga, ki tana ōhanga, kia tū kē he whenua hou mō te hunga manene.

I poua ngā tauira Māori mō te noho hauora ki *‘ngā uara ahurea ka tūhono ki ngā tikanga Māori, otirā ki te whenua kei reira ngā kāinga, ki ngā whānau me ngā hapori o tēnā takiwā, o tēnā takiwā’³.*

I ora katoa a ngāi Māori i roto i ō rātou whare papai i mua, otirā e marama ana tātou ko ngā whare i hoahoatia mō ngā rā kei te tū mai me whare whakaturuki i ngā hononga ā-taiao, ā-pāpori, ā-hangaroto ahurea, me te taha whanaungatanga, e whakaatatia ai ngā ritenga o ngā tikanga Māori, waihoki ngā uara, ngā āhuatanga noho, āhuatanga toiora tōnui.

Kua uaua ināianei te whiwhinga o te whānau i tētahi whare mahana, whare maroke, haumarū, āhua ngāwari te utu, toitū hoki. He maha ngā putanga noho hē mō ngāi Māori, he maha hoki ngā hē o te pūnaha kāinga noho o Aotearoa, nā te itiiti o te puna whare hei nohonga mō te taupori e piki haere nei te tokomaha. Ka whiwhi te Māori i tētahi 82%

1. He mea tuhi tēnei kupu whakataki e tētahi kaitohutohu motuhake, nō Te Amokura Consultants Ltd
2. Te Puni Kōkiri. (2019). *Te Rautaki Haumi ki te Kāinga Noho Māori*.
3. Durie, Mason. (2019). *Te Āhua o te Kainga - Shaping the House. Te Puni Kōkiri Māori Housing Network Seminar* Oketopa 2019.

o ngā utu ā-hāora, kia whakaritea ki te utu ā-hāora o ngāi Pākehā i te tau 2017⁴, ahakoa whare i hokona, i retitia rānei, nā te mākete whare whakataetae me ōna utu nui o nāianei kua uaua kē atu te tomo ki tētahi whare.

Kāore te hinengaro Māori i rata ki te whakaaro pupuru whenua takitahi me te taitara takiahi i mua, inā hoki, he pupuru ā-hapū te āhua o te pupuru whenua a te Māori, heoi anō, nā te urunga o te Māori ki tēnei pūnaha i piki te pāpātanga hoko whare a te Māori ki te 71% i te tau 1937, engari, i te kakenga o te puritanga whare ā-motu ki tōna tihi, kua heke kē te purutanga whare hoko a te Māori, nā te nekehanga nui ki ngā tāone⁵. I ēnei tau tata e ai ki ngā rekoata kei te 28% te pāpātanga hoko whare o ngāi Māori, kia whakaritea ki te 57% mō te taupori whānui⁶.

Nā te tūhura i ngā whenua Māori (he tokomaha te hunga pupuru i te whenua) e wātea ana mō te whakatū whare, ka taea te matapae kei roto i te katoa tētahi 1.47 miriona heketea (whenua rangatira), ā, ahakoa e kīa ana 80% he iti rawa te whakamahinga, he iti rānei ngā hua puta ai i te tau, ehara i te mea ka tōtika katoa ngā whenua rangatira Māori hei whakatū whare. Mō te hunga waimarie kia whai hea whenua Māori, tērā anō ngā āhuatanga aupēhi i te kimihanga rongoa hou (pēnei i ngā pūtea taurewa o Kāinga Whenua). Ko ngā uauatanga o te kimi whakaaetanga tērā i ngā whenua he maha ōna kaupupuru hea (he uaua te kimi whakaaetanga whakatū whare i te whenua i ērā atu rangatira, ki te kore he tarahiti whenua), he rite tonu ngā uauatanga o te utu whakahokinga mō ngā pūtea taurewa, ki ērā o te reti, o te hoko rawa rānei i te whare, nā te pāpaku o ngā whiwhinga moni o te Māori. Kua kitea e ngā kaupupuru whenua Māori he iti noa ngā mōhiotanga, ngā tohutohu me ngā tautoko hei whakatere i ngā piki me ngā heke o te pūnaha.

4. The Treasury. (2018). *Statistical Analysis of Ethnic Wage Gaps in New Zealand*.

5. Matthew Rout, J. R. (2019). KĀINGA TAHI, KĀINGA RUA *Homeless and landless in two generations – Averting the Māori housing disaster*. National Science Challenge.

6. Minita Whanaketanga Māori. (2020). *Te Maihi o te Whare Māori – Māori and Iwi Housing Innovation (MAIHI) Framework for Action*.

He ara te purutanga whare hei hanga rawa, hei whakawhiti rawa hoki mai i tētahi reanga ki tētahi, engari kāore i te mōhiotia ngā hua mai i ēnei moni punga i waenga i te iwi Māori, nā te torutoru o ngā rangatira whare, nā konei i hua ake ai te iti o ngā paringa moni taketake, i noho rawakore ai ngā reanga⁷. Mā ngā ara tuku moni, tuku tahua hoki e anga ana ki ētahi ara whānui kē atu ki te hoko whare, e wātea kē atu ai te hoko whare ki te tini, me te puta mai hoki o ōna painga.

Āe, he tika, he pai ki te Māori kia noho pipiri ngā whakatupuranga, te whānau, i ngā wāhi noho mō te katoa, heoi anō, i ēnei rā nā te nui o te utu i pēnei ai te noho apiapi o te tangata i ngā whare kanukanu, i puta ai hoki ngā pānga hauora hē (otirā he tino pērā mō te kaumātua me te tamariki). I te tau 2018, neke iti atu i te 1.4 miriona tāngata i te noho i ngā kāinga reti, ā, i tokomaha kē atu te kitenga o te kaireti Māori (20.5%) i waenga i ngā kaireti a Housing New Zealand, kia whakaritea ki te taupori whānui (12.9 ōrau).

Ko tēnei mea te tino tāmitanga e te kore whare he kianga mō te hunga kei ngā whare tino hē te noho o te tangata i roto, hāngengangenga ngā whakaritenga pupuru, he iti nei te taha tūmataiti me te taha mana o te tangata, ā, e whakarōpūtia ana ngā taupori ka pāngia e ēnei momo noho i roto i te pūnaha whare nā te taumata o te kore whare (kore tāwharu, kāinga wā poto, tokomaha te hunga i te whare, he whare tino hē mō te noho a te tangata i roto anō hoki).

Kei runga rawa te pāpātanga o te tāmitanga kore whare i waenga i te rangatahi Māori, Moana-nui-a-Kiwa hoki, ā, mō te nuinga, i kitea kei te whā, ki te ono whakareanga atu te korenga whare o ngā tāngata Māori, Moana-nui-a-Kiwa hoki, kia whakaritea ki ngāi Pākehā⁸.

7. Statistics NZ. (2020). *Housing in Aotearoa*.

8. Department of Public Health University of Otago. (2021). *Severe housing deprivation in Aotearoa New Zealand, 2018. Te Whanga-nui-a-Tara*.



I te marama o Poutūterangi/Māehe 2021, i tuhia 11,700 ngā kaitono Māori ki te Rēhita Kāinga Noho, o te katoa, arā 23,688 ngā kaitono⁹.

Nā ngā rōpū pēnei i ngā Whakaritenga Whare Noho Ohotata, Whakawhiti hoki (arā, ngā tāwharau mō te pō, te whakauru tangata ki ngā hōtēra), me te Tāpiritanga Whare Noho, i tutuki ai ētahi o ngā hiahia o ia rā, ngā hiahia tino uaua mō te tangata, kia whai whare ia. I te wā e whakaaro ana te pūnaha whānui mō te whakawhiti ki ētahi āhuatanga noho toitū kē atu, kua pā kē he pānga uaua ki te toitūtanga me te noho pipiri o te katoa o te pāpori, ki te hauora whānau, te noho motuhake me te noho tōtika hoki o te tangata.

Ko te whāinga whare tētahi āhuatanga taketake mō te hora painga mō te toiora ā-tinana, ā-hinengaro hoki o te whānau, mō tōna haumarū, toitū hoki, mō te tū tangata, tū māia

hoki i te ao, me te hononga o te tangata ki te whenua¹⁰. Me āta hoahoa te korenga e ōrite o te whāinga whare kia hāngai ki ngā tauira angitu o te Māori. He matatini tonu ngā ture, ngā ritenga kaupapa here, ngā kōkiri, ngā hōtaka, me ngā ratonga, arā, me āta whakatāhuhu mārire ēnei mea katoa ā ngā rā e tū mai nei, hei hanga pūnaha hou hei whakarato whare haumarū, toitū, hauora hoki mō ngāi Māori, otirā hei whakatutuki i ngā tūmanako.

He mea nui kia mārama ngā hinonga ki te tū o te ao Māori iēnei rā, otirā ki ngā kawenga o tēnā, o tēnā o rātou, ngā mea hoki ka taea e ia wāhanga i te pūnaha kāinga noho, kia puta ai he kaupapa here tōtika, kia heke ai ngā pānga hē mō te pāpori.

“The purpose of kainga [sic] is to help address the adverse circumstances”¹¹

10. Te Paetawhiti Ltd & Associates. (2020). *Te whanaketanga whānau, hapori hoki mā te kāinga noho, Pūrongo aromātai karapiti.*

11. Durie, Mason. (2019). *Te Āhua o te Kainga - Shaping the House. Te Puni Kōkiri Māori Housing Network Seminar Oketopa 2019.*

He Horopaki Matua

He whakaaro nā te Kāwanatanga mō ngā āhuatanga whāinga whare o ngāi Māori

Tērā te ki i te tuhinga a Te Rūnanga a Te Kāwanatanga, arā, *Te Maihi o te Whare Māori – Māori and Iwi Housing Innovation (MAIHI) Framework for Action*;

He mea taketake te whāinga whare hauora, toitū, whare ngāwari te utu, mō te pai o te noho me te tū rangatira o te tangata. Mā te pupuru a te tangata, me te ōrite o te whiwhinga whare ka taea e te whānau te whakatupu oranga mō ō rātou wawata o nāiane, o āpōpō hoki. He mārama tonu ngā pānga taimaha o te tāmitanga, o te muru raupatu, me ngā raruraru o te pūnaha whakarato whare.

Kāore te Māori i noho i waenga pū i ngā urupare o ō mua kāwanatanga ki te rarunga kore whare, e hē haere tonu nei. Kei ngā taunakitanga ka kitea te āputa nui i waenga i a ngāi Māori me ngāi Pākehā, puta noa i ngā āhuatanga whāinga whare i roto i ngā tekau tau – te korenga e whai whare; ngā utu reti whare taumaha ina whakaritea ki te whiwhinga pūtea; te iti o te pāpātanga o te puritanga whare i hua ake ai te kore hea i tētahi whare; me te rawakore tuku iho. Nā konei, i haere a ngāi Māori ki te rapu rongoā i ngā kōti, ki te kimi kitenga, tohutohu hoki i roto i te Wherawheratanga mō ngā Kaupapa Here, Ratonga hoki mō te Whāinga Whare a Te Rōpū Whakamana i Te Tiriti o Waitangi (WAI2750).

I te pekanga mai a Te Kaitirotiro Motuhake a Te Kotahitanga o ngā Whenua o te Ao mō te Tika kia Whai Whare Tōtika, i āta whakapuakina he kupu mō aua pānga nei ki ngā tika o ngā tātanga Māori me ō Te Moana-nui-a-Kiwa, kia whai whare tōtika.

Te kawenga mā Kāinga Ora

Ko tā Kāinga Ora he whakahiato i ngā tātanga, i ngā pūmanawa me ngā rawa o te kōwae o KiwiBuild Unit, Housing New Zealand me tōna pekanga whakawhanake, a Homes, Land and Community. He mea āta hoahoa tēnei kia tupu he tira i āta paiheretia, he tira tōtahi hoki, hei hora i ngā whāinga matua a te Kāwanatanga mō te whakarato whare, me te whanaketanga tāone i Aotearoa.

E rua ngā tino kawenga mā Kāinga Ora:

- te noho hei rangatira whare tiketike tūmatanui i te ao katoa
- te mahi kōtui me te hapori whakawhanake, ki a ngāi Māori, ki ngā kaunihera ā-rohe me te kāwanatanga ā-motu, me ētahi atu, mō ngā kaupapa whakawhanake ā-tāone, he mahi tonu ngā rahinga.

Hora ratonga reti whare ai a Kāinga Ora ki ngā kainoho whare tūmatanui āhua 87,000, me te whakatikatika, te whakawhanake hoki i ngā whare tūmatanui āhua 65,000 me te hora hua whāinga whare me ētahi atu ratonga. Tā Kāinga Ora he aronui ki te toiora o ngā kainoho i ōna whare, ā, he mahi tonu kia horaina he whare kounga tiketike, mahana, maroke, hauora hoki ki ngā kainoho o aua whare.

E aro nui ana hoki te whakahaere ki te horanga whanaketanga tāone kounga tiketike, e tūhonotia ai ngā kāinga ki ngā tūranga mahi, ki ngā waka, ki ngā wāhi wātea me ngā rawa katoa e hiahiatia ai e tēnei mea te hapori. Tētahi wāhanga o tēnei mahi ko te whakahohoro kē i te wātea mai o ngā whenua tōtika hei hanga whare, me te waihanga i tētahi hanumitanga whare, tae atu ki:

- ētahi whare tūmatanui
- ētahi whare āhua ngāwari te utu
- ētahi whare mō te hunga hoko whare tuatahi



- he whare māketē he rerekē ngā momo, ngā rahi, me ngā momo pupuru.

He tauawhiawhi ngā tūranga o Kāinga Ora me Te Tūāpapa Kura Kāinga-Ministry of Housing and Urban Development mō te whakarātonga whare me te whanaketanga tāone. Ko tā te Tūāpapa he arataki i te pūnaha whakarato, whakawhanake whare tāone, i ngā mahi kaupapa here, i te aroturuki, me te tohutohu hoki i te ahunga rautaki a te Kāwanatanga. He kawenga hoki tō Kāinga Ora mō te whakawhanake, mō te tautoko hoki i ētahi kōkiri i ngā rohe mō te whakarato whare, ā, e mahi ana hoki a Kāinga Ora mō tētahi ara hāngai ki te rohe hei tautoko i ngā lwi me ngā Rōpū Māori, me te pūnaha whare mā ēnei ara.

Te Pūtake o Te Rautaki Māori o Kāinga Ora

Nā te horopaki i puta mai i ō mua tirohanga, e tika ana kia whāia e Kāinga Ora tētahi ara i āta waitohungia, tētahi ara arowhānui hoki mō te tautoko me te whakamana i a ngāi Māori kia tutuki ōna wawata mō te whāinga

whare i Aotearoa, mō te whakatika hoki i ngā āhuatanga whare kua whakamāramatia atu nei.

Ko tā Te Rautaki Māori o Kāinga Ora he whakatakoto atu i te tūāpapa whakaahua, whakatinana hoki i ngā wawata o ngāi Māori mō te whāinga whare, otirā ka poua atu i te mātāpono hoa kōtui o Te Tiriti o Waitangi. Ko te whakaaro ka noho hei kiato tūhono, hei tohu ārahi hoki i te ahunga whakamua o Kāinga Ora me ōna ara mahi.

E whakaae ana mātou ehara a Kāinga Ora i te hoa Tiriti, i te mea he hinonga Karauna, ahakoa tērā, e ū ana mātou ki ngā hononga i waenga i ngā lwi/Rōpū Māori me Kāinga Ora, mā tētahi tauira hoa Tiriti. E mahi nui ana Te Rautaki Māori o Kāinga Ora ki te tautoko i a Kāinga Ora kia tutuki ngā wawata mō te whāinga whare Māori, i raro i te Tiriti o Waitangi, me ngā Ture taketake e pā ana ki te Tiriti, arā, te Kāinga Ora - Homes and Communities Act 2019, me te Urban Development Act 2020.

Ka whai te whanaketanga o tēnei rautaki i te hātepe mahi tahi me ngā iwi, ngā mātanga kāinga noho Māori, ngā kaihora me ngā

hinonga kāwanatanga matua hei kohi i ngā kōwae Māori katoa i raro i tētahi kitenga torowhānui, whakakotahi, me tētahi mahere whakatinana mō Kāinga Ora.

Inā ngā mahi a Te Rautaki Māori o Kāinga Ora;

- he whakaahua i ngā hononga whai tikanga o Kāinga Ora ki ngā lwi me ngā Rōpū Māori mā roto i te mahi hei hoa kōtui i roto i te whakawhanake i te rautaki
- he tautohu i ngā wawata o ngā lwi me ngā Rōpū Māori mō te whāinga whare me te whakawhanake tāone, ka noho hei pou mō ā mātou mahi i roto i Kāinga Ora
- he hoatu tūāpapa mō te whakatāhuhu i ngā mahi matua mō te whāinga whare o ngāi Māori, me te āta hāpai i ngā mahi e puta ai he huaputa pai ake mā ngāi Māori
- he ako i a tātou mō te toiora o ngā hapori Māori, me pēhea hoki e āwhinatia ai e Kāinga Ora
- he paihere i ngā kōwae Māori katoa o ngā mahi i raro i a Kāinga Ora ki raro i tētahi matakite, i ētahi whanonga pono, whāinga rautaki – mā konei e tino tūhono ai, e pāhekoheko ai, e hāngai tika ai ā tātou mahi
- he whakahāngai i ngā mahi ki Te Tūāpapa Kura Kāinga, ki Te Puni Kōkiri me te Manatū Whakahiato Ora, mā roto i te Anga MAIHI
- he whakarei i te hira o Te Tiriti o Waitangi me ōna mātāpono, me te tikanga o ēnei mō ngā lwi, mō ngā Rōpū Māori me Kāinga Ora.

He tuhinga whakaroto Te Rautaki Māori o Kāinga Ora, ā, ka whakamahia tonutia hei whakamōhio i a Kāinga Ora, hei ako i a ia mō ana mahi, otirā, hei tohu i ngā wāhi e taea ai e tātou te kawē tonu, te whakatū hoki i ngā ara mahi hinonga maha hei hora kāinga Māori.

He rite te anganga o Te Rautaki Māori o Kāinga Ora ki te MAIHI Framework for Action me MAIHI Ka Ora – National Māori Housing

Strategy, arā, ki ngā tuhinga tohu ara mai i te Tūāpapa Kura Kāinga – Ministry of Housing and Urban Development.

E tautoko ana a MAIHI i ngā hinonga Kāwanatanga kia mahi pipiri tonu, ā, ka pūpūtia e ia ngā kahanga o ngā kaimahi katoa puta noa i te pūnaha kāinga noho, me te mōhio, he kaimahi taketake a Kāinga Ora i roto i te hōtaka Kōtuitanga o MAIHI¹².

Me noho hei hoa kōtui i roto i te whakawhanake rautaki

I whakaraupapatia ki mua rawa te whāinga kia hoahoatia Te Rautaki Māori o Kāinga Ora i te taha o ngā lwi me ngā Rōpū Māori, me te whakaū a Kāinga Ora i tērā whakaraupapa, hei whakatinana, hei whakaata hoki i tētahi tauira kōtuitanga Tiriti mō te pāhekoheko. E mōhio ana mātou he whakaaro, he kaupapa kē anō tā ia hoa kōtui, arā, a Kāinga Ora (he hinonga nā Te Karauna) i konei, me ngā lwi, ngā Rōpū Māori hoki kua tīmata kē te whakatinana i tua ake nei, waihoki, ngā tuhinga rautaki kua tīmata kē te tārei. Me uru ki tō mātou hātepe hoahoa hou i Te Rautaki Māori he whakaaro mō ēnei āhuatanga kua whānau kē mai ki te ao, mō Kāinga Ora, mō ngā lwi me ngā Rōpū Māori anō hoki.

I whakatauria e mātou kia haere he tauira hoa kōtui mō te whakawhanake i Te Rautaki Māori o Kāinga Ora, e taea ai e ngā hoa kōtui e rua te noho tahi, te tārei ngātahi hoki i Te Rautaki Māori o Kāinga Ora, i runga i te mārāma ki ngā āhuatanga tērā pea ka pā, ka kore rānei e pā, ki te hātepe tārei rautaki.

12. I whakatūria he Hōtaka Kōtuitanga i te tau 2020, hei wāhi o te Maihi o te Whare Māori, arā, te anga mahi e mōhiohia nei ko MAIHI Framework for Action, i āhei ai ngā hinonga karauna (HUD, Kāinga Ora – Homes and Communities, Te Puni Kōkiri me te Manatū Whakahiato Ora) ki te pāhekoheko mō ngā kaupapa kāinga noho e piki ai te tuku whare ki te tangata, e mutu ai te noho kore whare, e piki ake ai hoki te haumarua o te pupuru whare.

E tū ana tēnei i runga i te nohonga hoa kōtui i roto i Te Tiriti o Waitangi hei tauira, hei tikanga whakapūmau hoki i tētahi ara kaupapa Māori mō te tārei i te tuhinga, e kitea ai e tātou he wairua whakakotahi i ō tātou whakaaro, me te kimi whakaaetanga mō ngā āhuatanga taketake o Te Rautaki Māori o Kāinga Ora.

Tō mātou ture

Kia ū tonu ngā mahi a Kāinga Ora ki ōna mātāpono whakahaere hou (wāhanga 14, Kāinga Ora Homes and Communities Act 2019) ā, me whakarite tikanga mō ngā pānga Māori, ina rā ētahi o aua tikanga:

- me whakarite tikanga te poari kia pai ai te whakarite pūnaha, hātepe hoki a Kāinga Ora – Homes and Communities, e whai pūmanawa ai, e whai raukaha ai a Kāinga Ora – Homes and Communities i āna mahi whakawhanake tāone hei hāpai i te Tiriti o Waitangi me ōna mātāpono, kia mārama, kia whakatinanatia hoki Te Ture Whenua Māori Act 1993, kia tuitui ai ki ngā Māori, kia mārama hoki ki ngā whakaaro Māori
- kua noho hei mahi matua mō Kāinga Ora – Homes and Communities te noho mārama, te tautoko, me te whakatinana i ngā wawata o ngāi Māori e pā ana ki te whanaketanga tāone
- kua noho hei mātāpono whakahaere mō Kāinga Ora – Homes and Communities ēnei e whai ake nei, me ētahi atu:
 - te tautohu me te tautiaki i ngā pānga Māori mō te whenua, te whakaae me te whakapūmau i te hononga o ngāi Māori, o tō rātou ahurea, tikanga hoki ki ō rātou whenua tuku iho, ki ō rātou wai, pae whenua, wāhi tapu, me ērā atu taonga tuku iho
 - te noho hei hoa kōtui, me te torotoro moata i ngā whakaaro o ngāi Māori me te

tāpae whāinga wāhi ki a ngāi Māori i ngā mahi whakawhanake tāone

- te here kia kua a Kāinga Ora – Homes and Communities e whakamahi i ngā whakawāteatanga mō te Kāporeihana Whare me ōna peka mō te hoko rawa i ngā whenua i pākia e ngā tika mō te whakakāhore tuatahi i raro i ngā ture whakataunga Tiriti
- te whakatinana i te Whakapuaki Kaupapa Here a Te Kāwanatanga (GPS) ngā tūmanako a te Kāwanatanga mō ngā pānga Māori, te mahi hei hoa kōtui me ngāi Māori, me ngā ritenga tautiaki i ngā pānga Māori.

Ētahi atu wāhanga matua ka noho hei whakamārama mō Te Rautaki Māori o Kāinga Ora

Ngā Mātāpono Whakahaere o Kāinga Ora

Tekau mā toru ngā mātāpono whakahaere o Kāinga Ora, e tākina atu ana i te Ture e kia nei te Kāinga Ora – Homes and Communities Act 2019. He kawenga tōpū tō te Poari o Kāinga Ora ki te Minita mō ngā Pūtea me te Minita Take Whare kia hāngai tonu ana mahi ki runga ki ia mātāpono whakahaere. He kawenga hoki tōna kia mahia hoki mā te whakaahua he pēhea e whakatinanatia ai ia mātāpono, mā ia whakatinananga hoki o aua mātāpono i roto i āna rautaki, i āna kaupapa here, me āna mahi.

Me whakarite tikanga motuhake a Kāinga Ora hei whakatutuki i ngā pānga Māori, tae atu ki te:

- tautohu me te tautiaki i ngā pānga Māori mō te whenua, te whakaae me te whakapūmau i te hononga o ngāi Māori, o tō rātou ahurea, tikanga hoki ki ō rātou whenua tuku iho, ki ō rātou wai, pae whenua, wāhi tapu, me ērā atu taonga tuku iho
- noho hei hoa kōtui, me te torotoro moata i ngā whakaaro o ngāi Māori me te tāpae



whāinga wāhi ki a ngāi Māori i ngā mahi whakawhanake tāone.

He Toa Takitini – Kāinga Ora Partnership and Engagement Framework

He rautaki ārahi mahi Te Toa Takitini, hei hoatu aratohu mō ngā ara hei whai mā Kāinga Ora kia tutuki ētahi o ana mātāpono whakahaere hou, me tana whakaae ki ngā kōtuinga me ngā hononga ka whakawhanaketia e Kāinga Ora. He mea taketake te whakapakari i ēnei hononga ki ngā hoa Tiriti o Te Karauna, ki ngā kiritaki me te hunga whai pānga mō tō mātou umanga, otirā, hei whakaputa i ngā hua papai mō ngā tāngata katoa o Aotearoa.

Hei urupare tonu te Anga Mahi Tahī, Tuitui (PEF) hoki ki ngā mātāpono whakahaere i te Wāhanga 14 o te Kāinga Ora – Homes and Communities Act 2019, ā, ka noho i roto i te horopaki o tā mātou anga rautaki, anga ture hoki me tōna hōtaka mahi.

E whakaae ana te Anga Mahi Tahī, Tuitui hoki i te hononga ahurei, motuhake hoki o ngāi Māori, o ngā iwi, hapū, marae, o ngā kaihora me ngā

whakahaere Māori, ki te Karauna me Kāinga Ora, me ngā whāinga wāhi kia tupu he mahi kōtui auaha.

Mā ngā mātāpono nei ka whakaahua i te nui o te hononga e huri mai ai a Kāinga Ora kia:

- mārama, kia tautoko, kia whakawātea hoki i te ara mō ngā wawata o ngāi Māori mā te āta rapu whāinga wāhi mō ngā Māori kia uru ki te whakawhanake tāone
- tautohu me te tautiaki i ngā pānga Māori ki ngā whenua, me te torotoro tōmua, kia whai tikanga ngā mahi.

Te Uiuinga Kaupapa o Wai 2750

I tēnei wā kua whai wāhi a Kāinga Ora ki Wai 2750, arā, ki te Wherawheratanga Kaupapa mō ngā Kaupapa Here, Ratonga hoki mō te Whāinga Whare. Ka rongo te wherawheratanga i ngā kerēme e toe ana mō ngā whakapae mō ngā kaupapa here

13. ARA - Accepting the past; Respecting the Inquiry and claimants; acknowledging when things should be changed.

me ngā ratonga whare. Ko te tini o ngā take whakaara whakapae mō ngā take whāinga whare he mea tāpae mai mō ētahi whānau, hapū, iwi hoki puta noa i te motu katoa. E whakapae ana te huhua o ngā take ōrite kāore te Karauna i whakarite paerewa whare tōtika mō ngāi Māori, ahakoa i te tuawhenua, i te tāone hoki, kāore hoki i tapae ratonga kāwanatanga, hōtaka, tautoko whakawātea hoki i te whare tōtika ki a ngāi Māori.

Kua hāpainga e te Karauna te ARA¹³ (accept, respect, acknowledge) hei ara whāinga māna mō te wherawheratanga, nā te mea, i raro i tēnei ara ka whakaaetia ngā tātai kōrero whāinga whare o Aotearoa, ka whakanuia te

katoa mā te urupare, tae atu ki ngā hiahia o ngā kaitāpae take, me te whakaae hoki ki ngā hapa, te tāpae hoki i ētahi mahi me te hua i roto i te pūnaha. E ū ana a Kāinga Ora ki te tautoko i te Karauna i roto i tēnei ara. Tērā pea ka pā te Wherawheratanga ki tēnei Rautaki, kia oti ōna tohutohu te tāpae mai.

Ngā Uara Whakahaere o Kāinga Ora

Kua whakawhanaketia e Kāinga Ora tētahi kāpuinga Uara hei whakaata i tō mātou āhua, hei whakahaere, mō ngā rā kei mua. I tāreia ngā uara e ngā uiuinga kaimahi, kaihautū hoki, me ngā awhehwe. I whakarewaina ngā

uara whakahaere i te marama o Hereturikōkā/Ākuhata 2020, ā, he pēnei:

- Manaakitanga – Ko te tangata hei pūtake: Mā te manaaki me te aroha nui ka whakapikia e mātou te mana o ngā tāngata me ngā whānau katoa, e mōhio ai rātou kei te tū tangata rātou.
- Te Mahi Tahī - He Pai ake ina Noho Tahī; Mā te mahi tahī, mā te whakawhiti mōhioatanga, whakaaro, kaingākau hoki mō ā tātou mahi, ka tino puta he painga mō Aotearoa katoa.
- Whanake - Kia Māia: Mā te pākiki, te auaha, te titiro ki pae tawhiti e hangaia ai e mātou he waihotanga pakari mō ngā whakatupuranga kei mua.

E whakaae ana mātou mā ēnei uara hei arataki tō mātou whakahaere, ā, he tauawhiwhi ēnei, he tautoko hoki i Te Rautaki Māori o Kāinga Ora, me ō mātou uara, e tākina atu nei i te whārangi 16 o tēnei tuhinga.

Te hautū i tēnei mahi

I roto nā Te Ariki Pihama (Ngāti Koroki Kahukura, Ngāti Ruanui, Ngāti Māhanga) – Te Ringa Raupā, Tāhuhu Rangapū Tuarua i Kāinga Ora – Homes and Communities tēnei mahi whai tikanga i hautū, me te tautoko mai o Te Kurutao, arā, te Wāhanga Māori, Kāinga Ora me te rōpū nui tonu.

Me tino whakamihi hoki ngā tika e toru i tonoa atu kia whakawhanake i Te Rautaki Māori o Kāinga Ora (ngā kaihautū o ngā iwi, ngā mātanga kāinga noho Māori; ngā kaihora me ngā rōpū whakaroto/whakawhiti hinonga). Ka puta tā mātou whakamoemiti mutunga-kore ki ngā mahi, me te wāhi taketake ki ēnei tira i ngā whārangi o muri atu i tēnei tuhinga, me tētahi rārangi ingoa.

Nei te reo mihi, e rere kau atu ana ki a koutou katoa i hāpai ake i tēnei kaupapa.



Ngā Wāhanga O Te Rautaki

He mea hira ngā putanga kua tutuki kē, nā tētahi hātepe tuitui pakari me te noho hei hoa kōtui tū tahi i roto i ngā mahi whakawhanake i Te Rautaki Māori o Kāinga Ora. Nā runga i te āwhina mai o ngā tira e toru, ngā hui ataata tuihono, me ngā hui kanohi-ki-te-kanohi, me ngā kōrero whakaroto huhua, ka tāpaetia e mātou ināianei te kaupapa whakamutunga o Te Rautaki Māori o Kāinga Ora.

E kōrero ana ngā wāhanga o te rautaki i tēnei wāhanga ki ngā takoha a Kāinga Ora ki te pūnaha kāinga whare torowhānui, mō te lwi me ngā Rōpū Māori. Ka noho ētahi o ngā tino wae (tino mahi) o te rautaki hei haepapa ka noho i waho i te aronga o Kāinga Ora, engari he mea āta tātaku i Te Rautaki Māori o Kāinga Ora hei wawata taketake, e tākina atu nei ki a mātou e ngā mātanga whare iwi, Māori hoki. Kua mahi nui mātou ki te tauwehe i ngā hinonga/rōpū māngai mō ētahi atu, kawea haepapa hoki, tēnā ki āna mahi, tēnā ki āna mahi, kei pōhēhētia ngā kawenga o tēnā, o tēnā.

Waihoki, e whakaae ana mātou he mea taketake he kawenga tōtahi a te Karauna e tutuki ai i a mātou te matakite me ngā whāinga mai i tēnei o ngā rautaki. Koia i hira ai kia whakaurua e mātou ētahi mahi taketake, i ngā wāhanga e kawea tahitia ana te haepapa ki ētahi atu hinonga, rōpū hoki, ina hoki, he wāhanga tō te katoa mō te whakatikatika i te wāteatanga kāinga noho Māori i Aotearoa.

Te Matakite

Mā te matakite e tautohu te whāinga wā roa ka noho hei korowai mō ngā wawata Māori mō te kāinga noho i Aotearoa. Hei whakamahara kau tēnei me hī ō tātou karu ki te paerangi, me māia te tū, me tuku ngā moemoeā kia rere i roto i ā tātou mahi, me mea hoki he mahere ki mua i a tātou, e eke ai ki pae tawhiti.

I ngā rā o nehe, i hangaia te kāinga Māori kia tūtata ki tēnei mea te puna wai. I puta te kī a te hunga whai wāhi, me pou ngā tikanga o te matakite ki te āhua o te wai, o te kai, o te whare noho, o te whenua, hei oranga tangata, hei pūtaka mō te oranga o te iwi Māori. E ai ki te Māori ko tēnei mea te whare whakamarumarū tētahi wāhi nui o te puna ora o te iwi.

Inā rā te tauākī matakite:

*He mana i te whenua, he kura kāinga,
he whare haumarū, he puna ora,
hei oranga tangata.*

Anei te whakapākehātanga, nā Rāhui Papa i homai, ā, i tautokona e te tino nuunga o te hunga whai wāhi mai:

*With pride of place, with a space
to call home with a protective house,
let the spring of life prosper and
bring wellbeing to all*

Ngā Uara/Ngā Mātāpono

I āta tāreia ngā uara, ngā mātāpono rānei hei tūāpapa mō Te Rautaki Māori o Kāinga Ora, kia noho hoki hei kaupapa taketake tūtohu i te ara. Mō konei, hei pūtaka ngā uara mō te rautaki katoa (ā, e tauawhitia ana e ngā uara o te whakahaere i kōrerotia ake nei) ā, ka noho ēnei hei aratohu mō te whakatinana me te mahi a Kāinga Ora ki ngā lwi me ngā Rōpū Māori, kia tutuki ō rātou moemoeā mō te taha whare.

1. **Mana Motuhake** – He mea whakamana a ngāi Māori kia rapua he rongoā Māori mō ngā take Māori. E mōhio ana te Māori ki ngā mea papai māna anō.
2. **Te Tiriti o Waitangi** – He taurite tonu ngā hoa kōtui o roto o Te Tiriti o Waitangi ahakoa he aha te āhuatanga, ā, ahakoa ehara a Kāinga Ora i te hoa Tiriti, e ū ana mātou ki Te Tiriti o Waitangi me ōna mātāpono, kia puta ai he painga nui ake mō ngāi Māori.

3. **He waka hourua** – He kōtuitanga motuhenga. Kia rite ki te waka hourua, e rua ōna takere, kia taurite te tū o tētahi, o tētahi, e pai ai te whakarewa i te waka. He mahi anō tō tētahi, tō tētahi, mā te mahi tika o ngā mea e rua e pai ai te rere.
4. **Kia manawaroa** – E whakatenatena ana e tautoko ana hoki i te toiora wā roa o te whānau, e peke whakarunga ai rātou ki tua atu i te oranga kautanga, ki te taurikura.
5. **He kura kāinga, he kura whānau** – Ko te whānau kei te pūtahi ka noho ko te hauora me te toiora o te whānau te kaupapa e kīa ai kua tutuki te kaupapa, me tā mātou kī, ko te whānau te pūtahi o tēnei Rautaki.
6. **He mana tō te kupu** – Kia tōkeke, kia kakama te whakatutuki i ngā mahi. He pono te mana o te kupu a tētahi, a tētahi o ngā hoa kōtui, he kakama i roto i ā rāua mahi, he pono te kī a tētehi, a tētahi.

Ngā Whāinga

He mea āta tārei māriri ngā whāinga o Te Rautaki Māori o Kāinga Ora kia rōnaki ai te rere o te waka. He mea āta tārei māriri kia pai ai te ahunga whakamua ka taea te ine i mahia i te haerenga ki te pae tawhiti, me te tutukitanga o te matakite wā roa.

Inā ngā ekenga taumata i tautokona e te hunga whai wāhi mai:

1. **I Kāinga Ora, kua whiwhi katoa a ngāi Māori i tētahi whare haumarū mō rātou, he āhua ngāwari te utu**

E whakaae ana tātou he maha tonu ngā whānau i runga i te rārangi mō ngā Whare Ohotata, kia kaua e meatia noatia tō tātou whāinga kia whakahaere tēnei maha, engari kia hāpainga te kauae whakawhiwhi whare tōtika, haumarū, āhua ngāwari te utu, ki ngā whānau katoa.

2. **Kia hira, kia kakama hoki te whakarāhinga ake o ō tātou ara whakarato whare mō ngāi Māori**

I runga i te mōhio he mea tēnei e tika ana kia kakama rawa te mahi, kia kaha tātou ki te whai i ngā ara whiwhinga whare mō te whānau, i runga i te kakama. E tika ana kia kaha te pūnaha kia rerekē te āhua, kia whakawāteatia hoki he tahua e whakarāhia ai ngā ara whakarato whare auaha.

3. **He ara nā te Māori i ārahi mō ngā take Māori, me te tautoko mai a te Kāwanatanga**

He whakaū i ngā rongoā nā te Māori i ārahi mō ngā take Māori. Te tikanga o tēnei, he tautoko i a ngāi Māori kia tautuhi i ō rātou hiahia, me ngā rongoā, hei tautoko i te toiora whānui kē atu mā te whānau. E tika ana kia tautokona ngā matea kaihautū iwi/ Māori e Kāinga Ora me ērā atu hinonga kāwanatanga, me te tuku rawa i te mana whakahaere, ina taea.

Ngā wāhi arotahi me ngā mahi matua

Ko ngā wāhanga arotahi i tautohutia hei wāhanga kotahi o ngā wāhanga arotahi matua e whā e tika ana kia aronui a Kāinga Ora ki aua mea rā (i runga anō i ōna herenga hei hinonga). He hira hoki kia mōhio ko ngā mahi matua i tautohutia hei tohu ka pēhea tā tātou whakatutuki i ā tātou whāinga, matakite hoki. Ka haere tonu te whakawhanake i ēnei i roto i te wāhanga whakatinana o Te Rautaki Māori o Kāinga Ora.

Kua kōrerotia ake i mua, ko ētahi o ngā mahi matua i tautohutia ka noho kē i raro i ngā tūranga me ngā haepapa o ērā atu hinonga, heoi anō, e noho tonu ana ēnei i te rārangi nā te mea, nā tō mātou tira tuitui ēnei i tautohu hei mea taketake mō te whakatika i te āhua ki te whiwhinga kāinga noho Māori. Kua kōmiria e mātou ēnei tūranga/haepapa i roto i te tuinga

whārangi kotahi (whārangi 3), i te ripanga i raro iho nei hoki, kei konei ka āta kitea kei a wai te haepapa matua, ka taea e Kāinga Ora te mahi tahi ki a wai kia tutuki ēnei whāinga.

1. Te Whāngai Pūtea me te Haumi Moni

Kia ngana ki te whakahāngai anō i ā tātou mahi hautū rongoā kāinga noho auaha, nā te Māori hoki i ārahi. Kei raro i ēnei, ko te kōutu painga i ngā tahua o waho o Kāinga Ora, he tūhura ara mō te tuku taurewa tāpiri, te urutomo ki ngā kāpuinga taputapu, rauemi, ki ngā hua hoki e taea ai e te whānau te tomo ki tētahi kāinga mōna, me te tautoko hoki i ētahi tauira pūtea Māori, ritenga tuku moni taurewa Māori rānei.

Ngā mahi matua	Te hunga kawē haepapa
Kia kawea he tatauranga o ngā whenua e wātea ana mō te whakatū whare	Kāinga Ora
He whakamahi i ngā kōkiri a Kāinga Ora hei tautoko i ngā lwi me ngā Rōpū Māori kia tomo ki ngā tahua moni mō te kāinga noho Māori (arā, Te Puni Kōkiri, Te Tūāpapa Kura Kāinga)	Kāinga Ora, Te Puni Kōkiri, Te Tūāpapa Kura Kāinga
He whakatu, he whakatika hoki i ngā hua/ratonga o nāianei mō te whakawhanake whenua (tae atu ki te hangaroto me Kāinga Whenua) me ngā tahua whakawātea whare	Kāinga Ora
He tautoko i ngā whāinga wāhi mō ngā tauira ahumoni iwi taketake/Māori e piki ake ai te tokomaha o ngā whānau tomo ki te whare mō rātau	Kāinga Ora
He kōkiri i te ahunga tika, he kauwhau tikanga hoki mō Kāinga Ora kia tukua kētia ana rawa ki ngā kōkiri tautoko i ngā matea kāinga noho lwi/Māori, tae atu ki te toiora whānau	Kāinga Ora
He whakaahei, he tautoko i ngā kōkiri whare Māori, arā, papakāinga/wāhi kāinga	Mā Kāinga Ora, me te tautoko mai o te Kaupapa Kōtuitanga MAIHI
He tautoko i ngā wawata Māori i te ao whakawhanake tāone	Kāinga Ora
He whakatū anō i te hōtaka nuku whare ki rohe kē	Mā Kāinga Ora, me te tautoko mai o te Kaupapa Kōtuitanga MAIHI

2. Te whakapakari pūmanawa

Me mahi nui ki te whakarahi whāinga wāhi mō ngā Māori kia whiwhi pūkenga, kia whakapakari pūmanawa hoki. Ko ētahi o ēnei ko ngā whāinga wāhi whakatū whare, te ruruku me te whakariterite 'pekanga hoko kotahi' hei whakamahine i te tuitui ki te iwi, te wātea o te mōhiotanga me te matatau (te whakangungu, ngā rauemi, ngā kete utauta), he tohutohu i āta rānga, te āwhina i te whānau, me te tautoko i te whanaketanga o ngā utauta whakamahere mā te whānau.

Ngā mahi matua	Te hunga kawē haepapa
He tautoko i ngā iwi kia tautoko i ngā wāhanga whakawhanaketanga pūmanawa i roto i te ao kāinga noho me te tautoko i te mahinga (arā, te mātauranga ahumoni, te urutomo ki te whare, ngā tahua, ngā mōkete me ngā taputapu)	Mā Kāinga Ora e tautoko ngā Kaiwhakarato ā-lwi, Te Puni Kōkiri (me ētahi atu)
He whakawātea i ngā ara tūranga mahi, akoranga hoki, tae atu ki ngā piatanga, ngā tūranga whakapiri, me ngā tūranga whakangungu tauhou hei whakapiki i ngā pūmanawa o ngā lwi me ngā Rōpū Māori	Mā Kāinga Ora, me te tautoko mai pea mā te Kaupapa Kōtuitanga MAIHI
He whakatū Rōpū Kaitohutohu ki a Kāinga Ora, hei hora tirohanga mai i waho hei tautoko i te whakatinanatanga me te arotakenga o Te Rautaki Māori	Kāinga Ora
He whakapiki i te āheinga Māori puta noa i Kāinga Ora mō ngā kaimahi, hei whakapiki hoki i te āheinga Māori puta noa i te whakahaere (tae atu ki te kimi tāngata mai i ngā puna iwi hei whakakī i ngā tūranga)	Kāinga Ora
He whakawhanake auahatanga matihiko mō te whāinga whare me te whakawhiti raraunga mō Kāinga Ora, mō ngā lwi me ngā Rōpū Māori	Mā Kāinga Ora, me te tautoko mai pea mā te Kaupapa Kōtuitanga MAIHI
Me whakaraupapa ngāi Māori ki mua hei kaiwhāngai, hei kaihoko paetata mā ngā ritenga hoko o Kāinga Ora	Kāinga Ora



3. Ngā Kōtuitanga

Me hanga kōtuitanga ki ngā lwi me ngā rōpū Māori hei hora putanga, hei hanga rongoā i āta tātaitia hei whakatutuki i ngā matea o te tangata. Ka uru ki konei ngā āhuatanga tautoko ture, whakamahere haumi ā-rohe, me te tautoko i ngā kaupapa ā-rohe motuhake kua tīmata kē.

Mahi(Ngohe) Matua	Te hunga kawē haepapa
He tautoko i ngā rautaki o nāianeī he ara hāngai-ki-te-hapori ō rātou (hei tauira, ngā rautaki ā-iwi) me ētahi rautaki ā-hapori tae atu ki ērā i ngā horopaki tuawhenua)	Mā Kāinga Ora ngā iwi, ngā hapori, e tautoko
Kia mārama kē atu, kia whakapaingia hoki te hauora o ō mātou hoa kōtui, me te whanaungatanga ki ngā lwi me ngā Rōpū Māori	Kāinga Ora
Me hanga kōtuitanga whakamana i te toiora ā-pāpori, ā-ahurea, ā-ōhanga, ā-taiao, ā-tōrangapū hoki te wāteatanga ki te hunga whai ora, te ōritetanga, te whāinga hua, te whakaute me te whakapono, e tāmaua ana hoki e Te Tiriti o Waitangi	Kāinga Ora
He tautoko i ngā pūtahi auaha ā-rohe mō ngā rongoā whare, te hoahoa me ngā tauira e arahina ana e ngā iwi, me ngāi Māori.	Kāinga Ora, me ētahi atu hinonga, iwi/rōpū Māori
Me turaki ngā maioro ki te tomo mai, me whakaheke ngā tauārai puta noa i te pūnaha kāinga noho, me te Kāwanatanga	Te Hōtaka Kōtuitanga o MAIHI



4. Te toiora whānau

Mā te whakatikatika i ngā take pūnaha mā ngā whānau Māori i te ao kāinga noho, ka mātua tautuhitia ai te ekenga taumata i runga i te wairua rapu putanga toiora mō te katoa. Ko ētahi o ēnei ko te whāinga wahi ki ngā mātanga whai pūkenga, te whakatika i te noho kore-whare, te waiho atu i ngā ritenga hokohoko mō te kāinga noho, ki tētahi ara whakaumu tikanga, i takea mai i ngā tūtohu toiora.

Ngā Mahi Matua	Te hunga kawē haepapa
He tautoko i te toiora me ngā matea o ngā whānau Māori e noho i roto i ngā whare o Kāinga Ora i tēnei wā	Mā Kāinga Ora, mā te Manatū Whakahiato Ora, me te tautoko mai pea mā te Kaupapa Kōtuitanga MAIHI
He whakapiki i te wātea mai o ngā ratonga tautoko kounga tiketike mā ngā whānau, me te noho hei hoa kōtui mā ngā kaiwhakarato ratonga pāpori, ina taea	Mā Kāinga Ora me ngā kaihora ratonga pāpori
He tautoko i te nukunuku a ngā whānau Māori mā te pūnaha kāinga noho, kia hoko whare rātou mō rātou anō	Kāinga Ora
Me tautoko ngā wāhanga whāiti o te pūnaha whare kāore i te mahi mō ngāi Māori, me te mahi pāhekoheko puta noa i ngā hinonga Kāwanatanga hei tautoko i ngā whānau, kia ora rātou (mā te <i>Kaupapa Kōtuitanga MAIHI</i>)	Te Hōtaka Kōtuitanga o MAIHI
He whakatū, he whāngai rawa hoki ki tētahi Tira Urupare Hohoro hei tautoko i ngā lwi me ngā Rōpū Māori, kia pai ake ai te hora mai o ngā āwhina hangarau e tika ana, e ngāwari ake ai te whakawhanake whenua me te hora whare.	Kāinga Ora

He horopaki mō te rautaki

Ko tā te wāhanga e whai ake nei nei he whakamārama i ngā horopaki matua me ngā kawenga haepapa mō te hora i Te Rautaki Māori o Kāinga Ora.

Te wātaka

Ko te wātaka mō Te Rautaki Māori o Kāinga Ora, he rima tau. Mō te nuinga, ka pau pea te toru ki te rima tau hei whakatutuki i ngā whāinga rautaki. I ētahi wā he rehurehu rawa te kōwhiringa wā-roa, e kore ai e kitea he ūnga mō ngā kupu, tēnā ko ngā whāinga ā-tau, ka wareware pea ki te tautohu i ngā huaputa nui nā te aro ki ngā hua wā-poto. Ahakoa rā, ka tautohutia ngā whāinga ā-tau mā te whakatinanatanga hei whakatutuki i ngā ūnga wā poto taketake.

Te whakaaetanga mana

Kua ara ake Te Rautaki Māori o Kāinga Ora nā ngā herenga ā-ture hou kua hāpainga e tō mātou Poari ki te Minita mō ngā Whare, tae atu ki ō mātou herenga pānga Māori hou. Nā reira, ka noho Te Rautaki Māori o Kāinga Ora hei tuhinga rautaki Kāinga Ora, ka hāpainga e te Poari me te Tumu Whakarae. I a mātou e whakaata nei i te tauira hoa-kōtui ōrite, arā, te tauira i whakawhanaketia ai Te Rautaki Māori o Kāinga Ora, kia whakatairangatia ai hoki te whāinga wāhanga tonu o te rōpū nāna te rautaki i hanga, ka whakatūria he Rōpū Tohutohu mō Te Rautaki Māori (ko ōna mema nō te tira whakawhanake rautaki) hei hora whakaaro o waho, hei tautoko i te whakatinanatanga, hei arotake hoki i Te Rautaki Māori o Kāinga Ora.

Te whāngai rawa

Tērā tōna whakaūnga ā-whakahaere ki te whāngai i ngā rawa tika ki te whakatinanatanga o Te Rautaki Māori o Kāinga Ora, mā te whakatū tūranga kaimahi, pūtea hoki e

tutuki ai ngā mahi matua me ngā hōtaka mahi i te roanga o te wā. Kei te whakawhanaketia ngā hiahia whāngai rawa i tēnei wā, ā, ka horaina hei wāhanga o te mahere whakatinana i Te Rautaki Māori.

Te hunga mātaki, whakarongo, pānui hoki

He tuhinga whakaroto Te Rautaki Māori o Kāinga Ora e tautohu nei i ngā wāhi matua hei aronga mō te hōtaka mahi a Kāinga Ora. Ko Kāinga Ora nui tonu e kawea haepapa nei mō te whakatutuki huaputa mō ngāi Māori, puta noa i te ao whāinga whare katoa. Nā reira, ka noho ko ngā wāhanga katoa, ngā kaihautū katoa me ngā wehenga katoa o te umanga te hunga pānui i Te Rautaki Māori. Me whakamahi hoki Te Rautaki Māori e Kāinga Ora hei whakangāwari i te paiheretanga o ngā mahi puta noa i te kāwanatanga. Arā, mā te tohatoha i tēnei rautaki ki ētahi atu tari kāwanatanga ka kitea te mahi tahi me te rurukutanga e tika ana hei whakatutuki i ngā whāinga o te katoa.

Ngā inenga tutukitanga

Ko tā te Tauākī Whakamaunga Atu a Kāinga Ora (SPE) he tātaki i āna matapae whakahaere, pūtea hoki mō te tau ahumoni. Kei te hiahia ngātahi te Poari o Kāinga Ora, o Te Tūāpapa Kura Kāinga, me te tira hautū o Kāinga Ora kia whakapikia ngā ratonga ka horaina e Kāinga Ora, ka tukua rānei hei hoa kōtui mā ngāi Māori, he pēhea hoki e inea ai te tutukitanga. Kua oti ngā ūnga o te Tauākī Whakamaunga Atu mō 2021/22 te whakawhanake hei ine i te ahunga whakamua o ngā pānga me ngā herenga Māori i roto i Kāinga Ora.

Kua oti katoa ngā tapeke taketake ūnga katoa (hāunga anō tētahi) te whakarite – ka hōkai tēnei mahi ki runga i ētahi wehenga pakihī o Kāinga Ora, ā, ka whakawhānuitia atu i roto i te mahere whakatinana o Tū Hengere.

1. Te ōrau o ngā kirimana me ngā whakaaetanga kaihoko mai, ki ngā umanga Māori, mā te rahi
2. Te tokomaha o ngā kaimahi o Kāinga Ora kua whai wāhi mai, kua tutuki hoki i a rātou ētahi hōtaka whakamātautau Mātauranga Māori
3. Te ōrau o ngā kaireti e kī ana he Māori rātou, e hari ana hoki he tika ā-ahurea ō rātou tauwhitinga ki Kāinga Ora. Te ūnga taketake neke atu i te >75 ōrau
4. Te ōrau o ngā ākongā hou kua uru ki tō mātou hōtaka piatanga, whakangungu tauhou hoki i te ao hanga whare, e kī ana he Māori rātou
5. Te ōrau o ngā hoa kōtui ā-iwi e kī ana e harikoa ana, e tino harikoa ana rātou mō tō rātou kōtuitanga haere tonu ki Kāinga Ora
6. Te ōrau o ngā kaitono Māori kua whiwhi whakaaetanga tōmua mō te kaupapa Whiwhinga Whare Whakatepe
7. Te ōrau o ngā whare ka hokona e ngā tāngata o Aotearoa mā tētahi, neke atu rānei o ō mātou hua hoko whare, e kī ana he Māori rātou.

E hāngai ana ēnei ritenga ki Te Rautaki Māori o Kāinga Ora me ōna wāhanga arotahi e whā, ā, mā konei ka ngāwari kē atu tō mātou ine, tō mātou mārama hoki ki te mahinga o Kāinga Ora i a ia e anga nei ki te whakatutuki i Te Rautaki Māori o Kāinga Ora. I tua atu i ngā ūnga SPE nei, ka hangaia e mātou ētahi inenga tutukitanga hei tautoko i te mahi aromātai/aroturuki o te whakatinana.

Te aromātai me te aroturuki

Ka whai kiko Te Rautaki Māori o Kāinga Ora mō tētahi wā motuhake o te rima tau, ahakoa tērā, ka arotakea pūpututia kia whai kiko tonu te rautaki, kia kamakama tonu te ahunga

whakamua i runga anō i ngā whāinga poto kua oti te tohu i mua. Koia ēnei ngā āhuatanga ka arotakea ia tau;

- He tōtika ngā kōwae o Te Rautaki Māori o Kāinga Ora mō ngā mahi e mahia nei?
- He taurite rānei ngā hiahia o ngā whānau Māori, me āta whakaaro rānei mō ētahi huaputa hou tērā pea ka pā ki ngā hiahia kua oti te tautohu mō ēnei whānau?
- E tino mahi ana mātou kia tutuki ā mātou whāinga poto i runga anō i ngā wātaka?
- Kua rerekē ngā maioro me ngā mōrearea tutukitanga?
- Ka taea e tātou te whakarahi i ngā hua o ā tātou mahi, te whakahohoro rānei i ngā mahi?
- Nā tēnei rautaki kua kaha ake te hononga o ngāi Māori ki ō rātou whenua, ki ō rātou āhuatanga noho tuku iho, ahurea hoki?
- E tika ana e whai ana a Kāinga Ora i ētahi ara hou hei whakarato ki a ngāi Māori, nā te rautaki te take?
- E tika ana kua tutuki i a Kāinga Ora ngā wawata o ngāi Māori, nā te aronga o Te Rautaki Māori o Kāinga Ora?
- E tika ana kei te tino kaha a Kāinga Ora ki te whakapiki i te whakapono i waenga i a ngāi Māori me te Karauna?

Me haere tētahi aromātai ia 12 marama mā tētahi kaiaromātai whai tiwhikete, tū motuhake hoki, he matatau ki ngā pūkenga me ngā āhuatanga tautōhito o ngāi Māori. E tika ana kia kitea ētahi atu taipitopito o te aromātai me te aroturuki i roto i te mahere whakatinana.

Te whakatinanatanga

Rite tonu ki ngā tuhinga rautaki katoa, kua whakaurua ki roto tētahi taumata tautohu i te whakatinanatanga, (arā, te pēheatanga) me ētahi kupu whakamārama, kia whai tūtohu ngā

mahi matua. Anei e rārangi ake nei ētahi kupu matua mō te whakatinanatanga:

- Ka noho te Poari hei manu tūtei mō Te Rautaki Māori o Kāinga Ora, ka riro hoki mā rātou e whakarite te arotakenga ā-tau o te rautaki.
- Ka whakatūria he Rōpū Tohutohu Rautaki Māori, ka riro mā te Poari e tautoko e hora mai he whakaaro hira nō waho, hei tautoko i te whakatinanatanga me te arotake i Te Rautaki Māori o Kāinga Ora.
- Ka huaina te mahere whānui mō te whakatinanatanga ko Tū Hengere, hei waitohu i te whakatinanatanga o Te Rautaki Māori ki ētahi ara mahi whāiti. Ka arahina te mahere whakatinana e Te Kurutao (he Rōpū Māori i roto i Kāinga Ora), ā, ka tautokona puta noa i ngā rōpū pakihī maha i roto i Kāinga Ora.
- Te mahere whakatinana o ‘Tū Hengere,’ - kua oti ngā marama e 6 tuatahi te whakawhanake, ā, ka whakatinana haeretia hei mahere whakatinana whānui i waenga i te marama o Mahuru/Hepetema 2021 – Pēpuere/Hui-tanguru 2022.

Te Rōpū Kaitohutohu mō Te Rautaki Māori

Ka oti te whakatūranganga o tētahi Rōpū Kaitohutohu mō Te Rautaki Māori hei mahi tahi me te Poari, hei rōpū o waho, kei roto nei ngā mema tira kaihautū ā-iwi, mātanga Whāinga Whare Māori hoki (kua whakapiria mai e mātou i roto i te wāhanga whakawhanake). Ka mahi tēnei rōpū i waho, ā, ka whakahaeretia mā te tari o Te Kurutao hei tautoko i te whakatinanatanga me te arotake i Te Rautaki Māori o Kāinga Ora. Ka whakatauria te tino kawenga (me te ingoa) o te rōpū tohutohu mā ētahi whakaritenga mahi marama, ka āta tuhia e ngā mema i tohua, i te taha o te Komiti Whāiti Māori. Ko te whakaaro ia mā te rōpū tohutohu

e hora whakaaro o waho hei tautoko i te whakatinanatanga me te arotake o Te Rautaki Māori o Kāinga Ora.

Ka tohua ngā mema o te rōpū tohutohu e Te Ringa Raupā, DCE Māori Kāinga Ora me te Komiti Māori Whāiti. E kore te rōpū tohutohu e whiwhi kawenga mahi, mana whakatau take rānei mō Te Rautaki Māori o Kāinga Ora, ā, ka āta mahi anō i runga tonu i ngā whakaritenga mahi kua whakaaetia (meāke ka whakawhanaketia, ka whakaaetia hoki i roto i ngā marama e 6 tuatahi o te wāhanga whakatinana).

Te paiheretanga o ngā mahi puta noa i ngā hinonga

Ko ngā mahi matua kāore e uru ki raro i te mana o Te Rautaki Māori o Kāinga Ora kua oti te tautohu i roto i te rārangi kawenga o Kāinga Ora. Kua oti ēnei mahi te āta wehewehe i te tuinga whārangi kotahi (wh 3), me tēnei tuinga hoki, hei tohu i ngā hinonga Karauna me ngā whakahaere ka tautokona e Kāinga Ora kia whakaratongia ēnei mahi.

Kāore i te marama ngā tūranganga me ngā kawenga whāiti o ngā hinonga Karauna matua hora kāinga ki a ngāi Māori, mō ngā hapori. Mā konei ka kitea te hiahia kia tika ake te whakawhiti kōrero mō ā mātou tūranganga me ngā takohanga i ō mātou hinonga, hei āwhina i a ngāi Maori kia whai kāinga noho. Me kimi ara tātou e haere tonu ai ngā rerenga mahi o ngā hinonga mai, me te āta tautuhi i aua rerenga mahi whakawhiti hinonga.

Inā tētahi whakairo i raro iho nei mō ngā tūranganga me ngā kawenga o Te Tūāpapa Kura Kāinga, o Te Puni Kōkiri, o Te Manatū Whakahiato Ora, me Kāinga Ora. Ka waitohutia hoki i roto i Te Rautaki Māori o Kāinga Ora whārangi kotahi ngā mahi matua (i raro i ngā wāhanga arotahi e whā) ka uru ki te mana o Kāinga Ora, me ngā mahi matua ka noho i raro

i te mana o ētahi atu hinonga. Hei wāhi o te whakatinana i Te Rautaki Māori o Kāinga Ora, kua ara ake tētahi whāinga wāhi mō ngā hinonga kōtui me Kāinga Ora kia whakapipiri, kia hora ngātahi mō ēnei huaputa nunui mō ngāi Māori. Waihoki, koia tēnā te mahi mō te Hōtaka Kōtuinga o MAIHI.

Te tū o Te Rautaki Māori o Kāinga Ora mō tō mātou ture, te ahunga o te kāwanatanga, te Anga Mahi o MAIHI, me MAIHI Ka Ora, He Oranga Tangata – Te Rautaki Kāinga Māori

I roto i te anga o te Kāwanatanga, e noho ana Te Rautaki Māori o Kāinga Ora i te taumata rautaki o te whakahaere, i te taha o Te Rautaki o Kāinga Ora. Hei tohu ēnei tuinga rautaki e rua mō ētahi ahunga tauawhiawhi, whakahāngai hoki mō Kāinga Ora, he tūhonohono nā te Tauākī Whakamaunga Atu mō ngā mahi kei mua, me Te Anga Putanga Tiri.



Ngā tūranga me ngā takohanga matua o ngā hinonga mātāmua hora ratonga mō Kāinga Māori

Ko Te Tūāpapa Kura Kāinga, ko Te Puni Kōkiri, ko Te Manatū Whakahiato Ora me Kāinga Ora: ko te Anga Mahi o MAIHI e noho ana hei pou herenga mō ngā mahi a ēnei hinonga, puta noa i te ao whāinga whare.



Ka mahi tahi Te Manatū Whakahiato Ora (MSD) me te hunga mate kāinga noho, whiwhinga pūtea me te tautoko rapu mahi. Tā MSD he aromatawai i te āhei ki te tomo ki te Rēhita Whare Tūmatanui, he tātai hoki i Ngā Rēti mō te Hunga Noho Whare Tūmatanui ka Herea ki te Whiwhinga Pūtea. Tā MSD hoki he hora āwhina ā-pūtea kia tomo, kia taea hoki te noho i tētahi kāinga noho wā roa, he whakahaere i te Tahua Kāinga Noho Matea Motuhake hei āwhina i ngā tāngata takitahi me ngā whānau ki te utu i ngā rēti mō ngā kāinga noho ohorere, wā poto.



Ko tā Te Puni Kōkiri he arataki i Ngā Kaupapa Here mō ngā Hōtaka Kāinga Noho o TPK, mō Te Ture Whenua Māori Act 1993, me te wātea mai o ngā pūtea taurewa mō te waihanga whare i ngā whenua Māori. Ka hora tikanga mō te tautuhitanga rautaki mā te whakamahi i te pūnaha nui tonu. Ka arotakea e ia te whāinga take o ngā kaupapa here me ngā ratonga o ērā atu hinonga kāinga noho, mō te hāpai i te oranga o ngāi Māori. Ka hora i te Pūtea Kāinga Noho Māori. Ka hora i ngā whakamātautau o Te Ara Mauwhare mō te Whiwhinga Whare Whakatepe, hei tautoko i ngā whānau whiwhinga pūtea pāpaku, tauwaenga hoki, kia hoko whare mō rātou. Ka tautoko hoki i ngā kaihoko mahi ā-takiwā mā te whakawātea tomokāngā mā ngā whānau, ngā hapū, ngā iwi Māori me te iwi Māori nui tonu mā te whakarite pūtahi tautoko whānui kē atu mā ngā hinonga Kāwanatanga.

DELIVERING TO MĀORI HOUSING



Ko tā Te Tūāpapa Kura Kāinga he kawē i ngā mahi rautaki, kaupapa here, whāngai pūtea, aroturuki, whakarite ture hoki mō te pūnaha hoa whare, whanaketanga tāone hoki o Aotearoa. Ka riro mā Te Tūāpapa Kura Kāinga e ārahi Te Maihi o te Whare Māori – Māori and Iwi Housing Innovation (MAIHI) Framework for Action, ka noho hei hoa kōtui mō ngā kaihora whare ā-lwi, a ngāi Māori hoki kia whakahohorotia te horanga whare me ētahi rongoā mō ngā whānau puta noa i te ao kāinga noho, mai i te whakatika i te kore kāinga, ki te whakatakoto ara mō te whiwhinga whare. Mā Te Tūāpapa Kura Kāinga hoki e ārahi MAIHI Ka Ora - te rautaki kāinga noho Māori ā-motu (i whakarewaina rā i te marama o Mahuru/Hepetema 2021).



Ko tā Kāinga Ora he whakahaere, he whakatikatika i tōna 65,000 whare tūmatanui. Ko tāna hoki he rēti i ō mātou whare ki te hunga i te Rēhita Kāinga Noho Tūmatanui. Ka riro hoki māna hei hora ētahi whare tūmatanui, taurewa, ka taea hoki te utu, hei whakatutuki i ngā hiahia, māna hoki e ārahi, e ruruku ngā kaupapa whanaketanga tāone.

Ngā tikanga whakahaere

He huarahi kaupapa Māori

I whakaaro mātou kia whāia he huarahi wānanga ki te whakawhanaketanga o Te Rautaki Māori o Kāinga Ora, nā reira i timataria e mātou tētahi rautaki tuitui toro-whānui kia whai wāhi ai te tini ki ngā mahi.

Ehara i te mahi ngāwari kia huaina tētahi huarahi kaupapa Māori hei whakawhanake i tēnei rautaki, i roto i ngā pūnaha Kāwanatanga. Ahakoa tērā, kāore e pai kia peka noa atu i ngā hātepe Karauna e mōhiotia ana, o te tuhituhi i ēnei puka i roto, me te hari ki waho ki te iwi kia tirohia e rātou. Ko te ara kē i whāia e mātou, me toro ki ngā Iwi me ngā Rōpū Māori, i te timatanga tonutanga, ka pōwhiritia ā rātou kōrero, kia whakawhiti kōrero, kia wānanga i ngā ariā matua. Ko tā ngā kaupapa Māori he wero i ngā mahi kua toka i waenga i te tini o te tangata, tae atu ki ngā whakaaro, me te whai kia puta ētahi hua nui mā te iwi¹⁴. He ao kē noa atu te ao o ngā kaupapa Māori, ehara i te mea i takea mai i Ūropi, ā, ka taupatu ngā whakaaro Māori ki ngā kaupapa taketake o tāwāhi. Ko te whāinga hei whakawhanake i Te Rautaki Māori i takea mai i te ao o ngā whakaaro Māori, o ngā whanonga pono Māori, o te mahi i ngā āhuatanga mā runga i tētahi hātepe Māori, pēnei i ngā wānanga, hei whakatutuki i ā tātou whāinga.

I whakaaetia tēnei huarahi e te Poari i te marama o Pipiri 2020, me ngā rawa i te taha e tutuki ai. Ko te whakatau, kia tū ētahi wānanga 11 puta noa i Te Ika-a-Māui me Te Waipounamu mā ngā whānau, mā ngā hapū, ngā iwi me ngā haporī kia hui tahi, kia wānanga i ō rātou wawata whāinga whare. Ka whakaaturia i

roto i ngā whārangi o tēnei tuhinga, nā te mate urutā o COVID-19 i kawē kē ngā mahi, i whakaheke hoki te maha o ngā toronga ki ngā iwi, tēnā i tō mua whakaaro. Ko te pūtake o tō mātou hātepe wānanga he whakapakari i te whakawhirinaki a ngā Iwi me ngā Rōpū Māori, i te whakarongo a tētahi ki tētahi (nā tētahi hātepe i āta whakahaeretia o te whakatū awheawhe, urupare, o te kōrero me te tohatoha whakaaro) i roto i te reo Māori me te reo Ingarihi. I tū ā mātou hui i ngā tāone matua nunui e toru, o Ōtautahi, o Tāmaki Makaurau me Te Whanga-nui-a-Tara, ā, nā te hau kāinga ā mātou huihuinga i huaki, i whakakopi.

He mea āta hoahoa tō mātou hātepe wānanga kia poipoia te whakaaro, te auaha, me te atamai hou, e taea e te hunga whai wāhi mai kia whakaaro anō mō ngā hiahia o tō tātou iwi, me ngā rongoā whare hei tautoko i a aua mahi. Ko tētahi whanonga pono matua ko te whakanui a tētahi i tētahi, i roto i ā mātou hui, ā, i whāia ngā kōrero whakanui i te mana o te tangata kē. Ko tā mātou huarahi mahi tēnei; Mā te kōrero, mā te wānanga, ka whai hua.

Ētahi urupare whāiti hei whakaaro

E maioha ana Te Rūnanga-Ā-Iwi-O-Ngāpuhi ki Kāinga Ora Homes and Communities mōna i whakawhanake Te Rautaki Māori o Kāinga Ora, heoi anō, kāore Te Rūnanga-Ā-Iwi-O-Ngāpuhi e tautoko i te āhua o te tautoko a te rautaki i Te Tiriti o Waitangi, i te āhua rānei o te kapenga o He Whakaputanga o te Rangatiratanga o Nu Tīreni. Ahakoa tēnei tūnga, he maha ngā tūmanako a Te Rūnanga-Ā-Iwi-O-Ngāpuhi kia mahi tahi, kia whai hua hoki ngā mahi me Kāinga Ora hei raurangi.

14. Smith, L. T. 1999. *Decolonizing Methodologies. Research and Indigenous Peoples* Rānana, Piritana: Zed Books (me Otago University Press).

He Rārangi Kupu

āhua ngāwari te utu	affordable
āhuatanga noho	living conditions
āhuatanga toiora	wellbeing
ahurea	culture, cultural
hangaroto	infrastructure
haumarū	safe
hauora	healthy
hononga ā-taiao	environmental relationships
hononga ā-pāpori	social relationships
hononga ā-ahurea,	cultural relationships
ine	measure
kāinga noho	house, housing
kāinga noho Māori	Māori housing
kaitāpae take	claimant
mātanga	expert, specialist
moemoeā	dream
paerewa whare Māori	Māori housing standards
pae whenua	site of significance
rautaki	strategy
rawakore	poverty
ritenga	practices
ruruku	co-ordinate
taha whanaungatanga	relationships of a person or organisation
take	issue, claim
tikanga Māori	Māori customary practices
tohutou	advise, advice, advisory
tuitui	engage with people
turuki	reinforce
uara	living
wāhi tapu	sacred place
wawata	aspiration
whakaata (tia)	to reflect
whakahohoro	accelerate
whakaingoa	nominate
whakatinana	implement, fulfil
whakaturuki	reinforce
whakawhanake	to develop something
whanake	develop
whanaketanga	development

He Tāpiritanga

Tāpiritanga tuatahi

He uiuinga whakaroto

I timataria e mātou tā mātou toronga whakaaro ki tētahi uiuinga tuihono i ngā kaimahi a Kāinga Ora i te marama o Hereturikōkā 2020, i whakakapingia ai ngā whanonga pono Māori, te tuituinga, te hauora me te toiora, Te Tiriti o Waitangi me te Mātauranga Māori. Kāore i tino nui ngā whakautu i hoki mai, neke iti atu i te 180 ngā whakautu, ā, kei roto nei ētahi raraunga ine kounga, ine rahi hoki, i whakamahia kia marama ki te takatū o te whakahaere mō te hāpai i Te Rautaki Māori o Kāinga Ora. Ahakoa rā, e tiria ana ētahi whakaaro i raro iho nei, i roto i te kāpuinga urupare.

Te whai wāhi mai o ngāi Māori

- I kī ētahi kaiwhakautu 130, me marama katoa a Kāinga Ora ki ngā mahi tuitui puta noa i te whakahaere katoa, puta noa hoki i ētahi atu hinonga, me whakatika hoki ngā āhuatanga mō te tuitui.
- Mā tēnei e heke iho ai te nui o ngā mahi e tuaruatia ana, ka noho hei taumahatanga mō ngā lwi me ngā Rōpū Māori, he moumou rawa anō hoki.
- Mā ngā pūnaha pai ake ka rurukutia ā tātou mahi i roto i ngā rohe, mā roto hoki i ngā rōpū pakihi, ā, he mea tēnei ka whakawhanaketia, ka ruruku tahitia hoki mā Te Rautaki Māori o Kāinga Ora.
- 140 ngā kaiwhakautu i kī, me whakarite tikanga mātou kia whai pūkenga, kia whai māramatanga hoki ngā kaimahi e mahi ana i te taha o ngā iwi.

Te Tiriti o Waitangi

- 83 ōrau o te hunga tuku urupare mai i kī, he mea hira Te Tiriti o Waitangi/The Treaty of Waitangi mō ā rātou mahi, ā, e toru tāngata

i roto i te whā i kī, e whakaaro nui ana ki ngā mātāpono o te Tiriti i ā rātou mahi, ka whakaaro hoki/rānei he pēhea te tautoko o ā rātou mahi ki te ao Māori.

- Kei raro kē te maha o ngā urupare i kī, i te tino māia mō tō rātou marama ki te Tiriti, ā, 34 ōrau i kī, i te āhua māia.
- E whakaae ana mātou, i raro i te Tiriti o Waitangi me Te Treaty of Waitangi i roto i Te Rautaki Māori o Kāinga Ora, nā te mea e noho ana ko te whakatairanga i te Tiriti hei wāhi taketake mo te rautaki. He mea pai te tokomaha o ngā kaimahi e arohaehae ana i ā rātou mahi mō ngā mātāpono o Te Tiriti, me ngā rōpū Māori.

Te Hauora me te Toiora

- Kei runga noa atu, arā, kei te 92 ōrau o ngā tāngata i kī ko tētahi ara taketake mō te takoha o Kāinga Ora ki te hauora me te toiora kia marama tonu ngā hapori Māori ki ngā hiahia o aua hapori, kia tika hoki te mahi tahi ki ngā iwi hei whakatutuki i ō rātou tūmanako mō te kāinga noho.
- Ka kitea tēnei moemoeā i roto i tō mātou aronga ki te whakawhanaketanga o Te Rautaki Māori o Kāinga Ora, nā te tono ki ngā lwi me ngā Rōpū Māori mō ō rātou hiahia, moemoeā hoki. Nā tēnei māramatanga, kua mōhio kē atu mātou ki te āta kawē whakamua i ngā rongoā kāinga whare hei painga mā ngā lwi me ngā Rōpū Māori.

Tā tēnei uiuinga he tāpae i tētahi tūāpapa raraunga mō tō mātou whai kia whakawhanaketia Te Rautaki Māori o Kāinga Ora, e marama ai mātou ki ngā hiahia o roto, me te āheinga mō te hora ratonga pai ake ki a ngāi Māori, he aha ngā hiahia o ngā kaimahi mō te whakapakari pūmanawa, te whakapiki i te ngākaunui me te māramatanga ki te ao Māori.

Te torotoro whakaaro

Ko ā mātou whakaritenga mō te whakawhanake i Te Rautaki Māori o Kāinga Ora i timata ki te whakatau kia tū ētahi wānanga 11 puta noa i te motu me ngā Iwi, Rōpū Māori hoki. Ki a mātou, nā tēnei taumata tuituinga i whakaata te hira o te mahi hei hoa kōtui i te whakawhanaketanga o Te Rautaki Māori o Kāinga Ora. Nā te pānga mai o te mate urutā o COVID-19 me te katinga nui i te Taumata Ohiti 4 o te motu katoa i te marama o Poutūterangi 2020, me te katinga tuarua i Hōngongoi 2020, ka hurihia e mātou tō mātou ara kia ū tonu mātou ki ngā herenga a te Kāwanatanga mō te huihuinga tangata, me te hiahia kia haere whakamua tonu te torotoro whakaaro.

Ka panonitia i reira te torotoro whakaaro whakawaho kia ono kē noa iho ngā wānanga ki ngā mātanga i āta tautohutia, me ngā kaihautū ā-iwi, me te whai kia tū ētahi wānanga tuihono, kanohi-ki-te-kanohi hoki. I tū ngā hui e whai ake ake nei ki ngā kāhui o ngā tira i āta tautohutia (kua oti ēnei te whakaingoa i raro iho nei):

He wānanga tuihono mō te rua-hāora

1. He wānanga whakamōhio mō ngā Tari Maha – 7 Whiringa ā-nuku/Oketopa, 2020.
2. He wānanga whakamōhio mō ngā Mātanga Kāinga Māori - 28 Whiringa ā-nuku/Oketopa, 2020.
3. He wānanga ki ngā Kaihautū ā-Iwi - 11 Whiringa ā-rangi, 2020.

Ka whakatūria ētahi wānanga kanohi-ki-te-kanohi e whā hei whakawhanake i te rautaki, puta noa i te motu

1. Wānanga kanohi-ki-te-kanohi 1 – Ōtautahi – 18 Whiringa ā-rangi/Noema, 2020.
2. Wānanga kanohi-ki-te-kanohi 2 – Tāmakiakaurau – 26 Whiringa ā-rangi/Noema, 2020.

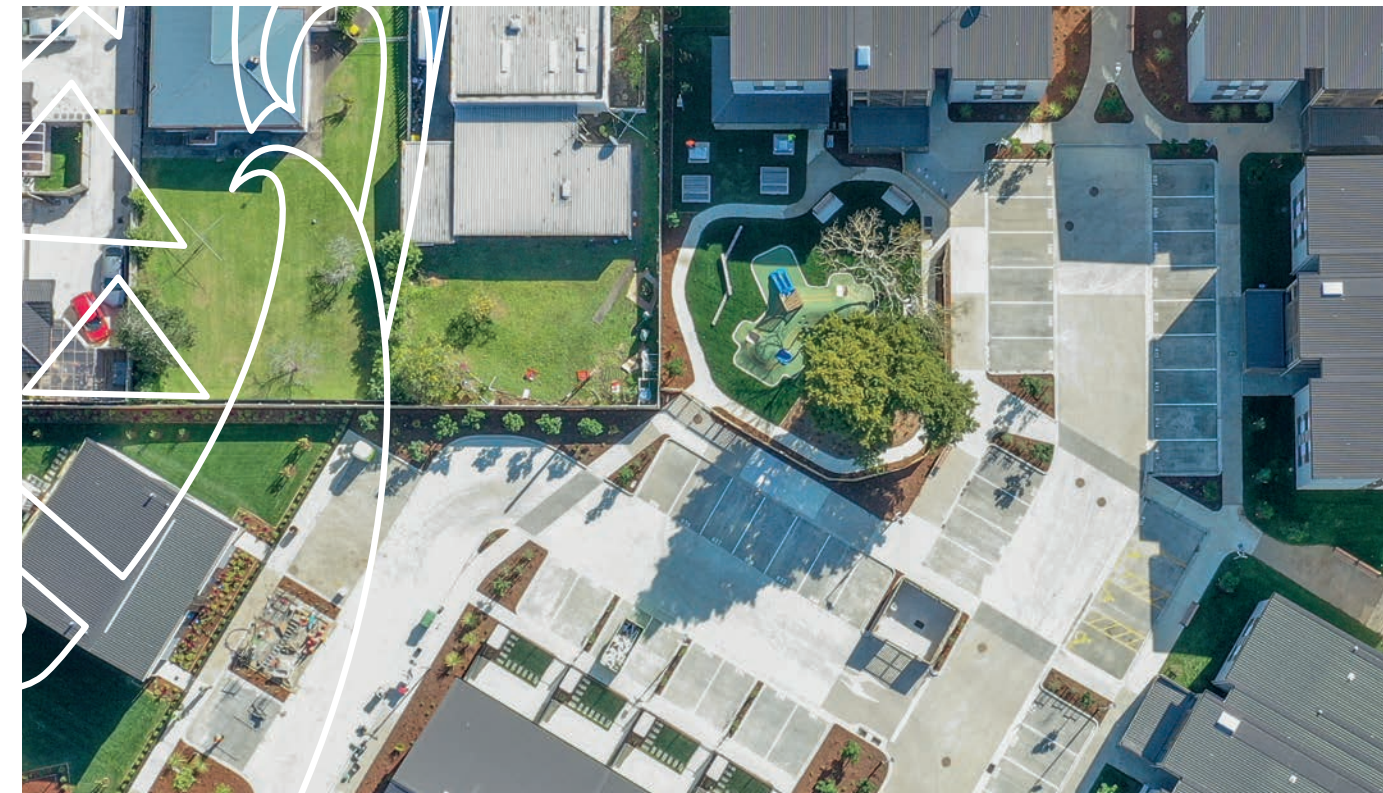
3. Wānanga kanohi-ki-te-kanohi 3 – Te Whanga-nui-a-Tara – 2 Hakihea/Tihema, 2020.
4. Wānanga kanohi-ki-te-kanohi 4 – Te Whanga-nui-a-Tara – (i hurihia te ara hui i mua tata tonu atu i te wā o te hui, nā te huringa Taumata Ohiti o COVID-19) – 5 Poutūterangi/Māehe, 2021.

Ko te whāinga o te wānanga he whakarongo ki ngā whakaaro o te marea, he tautohu i ngā matea me ngā wawata, me te noho hei waharoa mō ngā iwi puta noa i te motu. I whakatakotoria ngātahitia ētahi kōrero e Kāinga Ora rāua ko Te Tūāpapa Kura Kāinga i te wānanga tuihono kupu timatanga tuatahi hei tūhono i te *MAIHI Framework for Action (MAIHI)* me te whakatakoto i ngā tūāpapa e taea ai te tuhi tētahi Rautaki Māori mōKāinga Ora .

Te tuhi rautaki

Hei wāhanga o tētahi hātepe i āta whakatauria e ngā tira tuitui e toru, nā Tākuta Acushla Sciascia (Māori Strategy Lead) i whakaraupapa ngā rerenga kōrero, nāna hoki i tuhi tētahi tuhinga rautaki tōtahi, i tākina ai ngā kōwae matua o tētahi rautaki. I muri i te wānanga kanohi ki-te-kanohi o te 2 Tihema/Hakihea 2020, ka timataria te tuhinga o te kaupapa hukihuki tuatahi o te rautaki, ā, i whakaotingia, i whakahokia hoki ki ngā tira tuitui e toru i te 15 Hakihea/Tihema 2020, hei arotake, hei whakaputa whakaaro mā rātou.

I muri i te wānanga huitopa o te 5 Poutūterangi/Māehe 2021, i matapakina te tuhinga hukihuki, me tā rātou whakaae kia hui tētahi kāhui iti hei tautoko i te Kaiarataki Rautaki ki te tuhi anō i te rautaki. I pēnei ai te whakaae tahi, kia ōrite katoa ngā wāhanga katoa, kia kamakama te mahinga, ina hoki, kāore i māhorahora te wātaka, he mahi i runga i te hohoro, kia taea te whakarongo urupare i muri i te hui o te 5 o Poutūterangi/Māehe. Nā te



wātea o ngā mema, i uru ki te rōpū ētahi kanohi tokorua o ngā kaihautū ā-iwi, he tāngata whai wāhi hoki ki te tira.

Ngā Urupare

Mō te tuhinga hukihuki tuatahi o Te Rautaki o Kāinga Ora - i pōwhiritia ō mātou tira e toru kia tuku imēra mai, kia tae mai hoki ki ētahi wātū 'topa mai' mā te Zoom. Nā tētahi tangata i tae mai ki ngā hui i tuku urupare mai mā te imēra, ā, e iwa ngā tāngata whai wāhi i tae atu ki tētahi, neke atu rānei o ngā wā tuku urupare tuihono i runga ake nei. I tae ā-waha mai te nuinga o ngā urupare i te wānanga tuawhā i tū mā te Zoom i te Paraire, 5 Poutūterangi/Māehe 2021.

He kōrero mō te Tuhinga Hukihuki Tuarua o Te Rautaki Māori o Kāinga Ora – i pōwhiritia ngā tira kia tuku urupare ā-imēra mai; i whiwhi urupare mātou mai i ngā tira e toru, me ētahi urupare whai take mai i ētahi o ō mātou hinonga kōtui.

I whakaputaina he tuhinga tuatoru, ā, i tohaina ki te hunga whai wāhi ki te tiro i te 30 Āperira/Paengawhāwhā me te pōwhiri kia tukua mai

he urupare. I tērā wā, i timata ngā kōrororero i waenga i ngā rōpū pakihitaki take, ngā kaiwhakahaere, ngā Tumu Whakarae o raro puta noa i Kāinga Ora, hei Whakawhitiwhiti Kōrero mō Te Rautaki Māori o Kāinga Ora.

I tāpaetia Te Rautaki Māori o Kāinga Ora ki te Komiti Māori Whāiti i te 26 Haratua/Mei 2021, me te tāpae mai o ngā whakaaro mō te tuhinga hou. I muri i tērā i tū tētahi wānanga ki ngā mema poari o te Komiti Māori Whāiti i te 15 Hune/Pipiri 2021. I tapaeita Te *Rautaki Māori o Kāinga Ora* ki Te Tira – Pae Tātaki i te 17 Pipiri/Hune 2021, ā, i whakamanaia hei whakatakoto ki te Poari o Kāinga Ora te 29 Pipiri/Hune 2021. Ehara i te mea me torotoro a Pae Tātaki/Strategy and Risk i te mea, he mahi ō mua torotoronga whakaaro mō Te Rautaki Māori o Kāinga Ora me te *Kāinga Ora Organisational Strategy*.

Kua tuhia ngā urupare katoa, kua tika hoki ngā mahi whakarongo, whakahou, kei tētahi whārangī Excel ngā tuhinga, he mea whakarite nā te Kaiarataki Rautaki, me tāna waitohu me i whakahokia atu he kōrero mō ngā urupare i roto i ngā tuhinga rautaki hukihuki.

Tāpiritanga tuarua – Ngā whakaaro o ngā iwi mō te kāinga noho Māori

He tirohanga mai i tētahi o ngā kanohi ā-iwi ki te āhua o te kāinga noho Māori o tēnei wā.¹⁵

Ahakoia tērā ētahi Māori ka āhei ki te eke ki ngā taumata rite tonu ki te Pākehā mō te hoko whare, me te ritenga whiwhinga moni, ko te nuinga o ngāi Māori kei raro rawa mō ngā tatauranga whāinga whare, me te tōtika hoki o te whare. Kei raro rawa hoki te tini o ngāi Māori, arā, ko rātou te nuinga o te hunga i ngā whare kāwanatanga, whare kaunihera hoki. I tua atu i tērā, he nui kē ātu te wehenga o ngāi Māori kei te penihana whiwhinga moni, kei te kore mahi rānei, ā, he ōwehenga nui hoki kei ngā whare mō ngā māuiuitanga hinengaro, ngā kāinga noho kāwanatanga, me ngā whare herehere, tae atu ki te tiaki mō te waranga rauhea - ēnei mea katoa hei pēhi i te whānau whānui. Ko ēnei tatauranga he hua nō te pāpaku o te mātauranga, o ngā kāinga i te tuawhenua, i ngā hapori he nui te rawakore, te pēhi mai a te kēnge, me ngā taumata whiwhinga moni pāpaku kei ngā ōhanga tāone kua pokea e ngā uauatanga, ngā utunga nui whakaharahara rānei o ngā tāone nunui.

He maha tonu ngāi Māori e noho ana i ō rātou whare ā-whānau tuku iho, he whare kihai i whakatikaina ētahi, he pākarakaru ētahi, ā, kāore te whānau e mōhio ki te whakatikatika, he iti te moni rānei. He maha ngāi Māori e noho tonu ana i tō rātou rohe ā-iwi, ā-hapū hoki hei pupuru i ō rātou tikanga, me ō rātou tika ki te whenua, tae atu ki te tuakiri, engari ka hua ake pea i konei te mokemoke, te kore-mahi me te rawakore tūturu, ā, ko te hua, ko ngā paerewa pāpaku o te noho o te iwi. He tokomaha ngāi Māori kei ō tātou tāone

nunui e noho ana, he pai te noho i roto i ngā whare reti, engari ki a rātou he take-kore te whakaaro penapena moni mō te hanga whare nā te mea, tērā noa ake te kakenga o te utu mō tētahi whare hoko ia tau, i te kakenga o te whiwhinga moni o te tangata. Ko tō mātou āhei, hiahia hoki kia noho i roto i tō tātou whānau whānau te pūtaka e noho ai tātou i ngā whare apiapi, me te hua mai o ngā pēhanga whaiaro, hauora hoki. Kei runga rawa te maha o ā tātou tamariki, rangatahi ka kitea i ngā tatauranga hē mō te taikaha, mō te mātauranga, te hara ā-ture, ngā kēnge, te hapūtanga taiohi, me te whakamomori - mā te tuku whare noho tōtika ki a rātou me ō rātou whānau, e āwhinatia ai ēnei tatauranga.

Me kī, ka taea ngā maioro taketake ki te whāinga whare me te kounga whare mō ngāi Māori te whakaahua, pēnei:

- he teitei rawa te utu mō te kāinga noho, ina whakaritea ki ngā whiwhinga pūtea, me te utu mō te noho i te ao nei
- kāore i te nui te whiwhinga pūtea hei penapena mō te moni puna mō ētahi whare
- kāore i te nui te whiwhinga pūtea mō ngā utunga mōkete
- kāore i te rawaka te mōhioanga mō te hoko whare, te kimi moni hei hoko, me te whāinga whare tūturu

Ko tētahi kōrero pai ia, he maha ngā whakahaere ā-iwi, Māori hoki, tae atu ki ngā rōpū aroha Pākehā, me ngā rōpū ehara i te kāwanatanga kei te whakaahua me pēhea e hurihia ai ngā āhuatanga hē, me te puta mai o ngā hua papai i muri. Kei te tutuki haere te whāinga whare āhua ngāwari te utu, me ngā paerewa noho āhua ngāwari te utu mō

te tangata i ētahi wāhi iti puta noa i Aotearoa mā te:

- noho mai o ngā whenua Māori mō te hoko, mō te reti, ngā kirimana noho whare rānei
- ngā pūtea aroha kāwanatanga, haumitanga tūmataiti, nā te hunga ngākau aroha hoki
- Kiwisaver, KiwiBuild, me ngā Pūtea Tāpiri
- ngā kaupapa pānga tohatoha, reti-hei-hoko hoki
- ētahi hanganga mōtotoru tauwaenga ki te tiketike, he iti iho te utu mō te mita tapawhā
- te akoranga ahumoni.

Mā tēnei kete rongoā ka mōhioia, tērā te huhua o ngā rongoā e tika ana mō ngā āhuatanga noho mai o te tangata takitahi, o te whānau hoki - kāore he taniwha kotahi hei tohu i te ara mō ngā raruraru katoa Ahakoia tērā, he hua matua tō ētahi o ēnei rongoā, ratonga hoki, he mea tino taketake:

- te noho utunga pāpaku ahakoia i retitia, i hokona rānei - (kia kaua e neke ake

te reti, te mōkete rānei i te 30% o te whiwhinga pūtea)

- te anga pūmau, he tautoko, he akoranga mō te hoko whare, me te whakatikatika, te whakahaere i tō whare
- te wātea noa me te ngāwari o te urutomo ki ērā atu ratonga tautoko
- he aratohu auau mō te tuitui mai i ngā mea tauhou ki te takiwā noho me te hapori.

Nā ēnei rongoā kua maha ake ngāi Māori kua whiwhi whare tōtika, me ngā pānga ka hua ake i ngā paerewa noho pai ake, e kitea ai ētahi ētahi atu hua takatika. Ka heke haere ngā tatauranga hē, ka hoki mai anō te mana, te tū tangata, te māia me te whakaaro hauora i reira mō ngāi Māori i mua. Nā ēnei whakapikinga ka kitea he whānau, he takiwā noho, he hapori, he hapū, he iwi, he whenua e tupu ana, e pai ana anō hoki te noho mō ia tangata Māori, mō ia tangata Pākehā hoki, he haumaruru, he hauora, te tōitū te noho.



15. Ko tēnei kanohi ā-iwi tētahi i noho mai ki te tira, he kaiāwhina hoki i te tāreitanga o Te Rautaki Māori o Kāinga Ora

Tāpiriranga tuatoru – Ngā mema o ngā tira tuitui

Ko ngā mema o ngā tira i whai wāhi ki te whakawhanaketanga o Te Rautaki Māori o Kāinga Ora

E toru ngā tira i whakapāngia atu kia whai wāhi ki Te Rautaki Māori o Kāinga Ora, i runga i tō rātou pūkenga, mātauranga, tautōhito hoki i te rāngai kāinga noho Māori, arā:

1. He kanohi nō ngā kaihautū ā-iwi
2. He mātanga kāinga noho Māori
3. he kanohi nō roto, nō ngā hinonga huhua hoki.

I whakanui a Kāinga Ora i te nui o te takoha a te tangata takitahi, a ngā tira hoki i ōna rā mahi, i tōna mōhio hoki mō tēnei kaupapa, nā reira, i utua ngā hāora mahi a ērā ehara i te āpiha whai tūranga i te tari kāwanatanga.

E hiahia ana a Kāinga Ora ki te mihi, ki te whakanui hoki i ia tangata o ngā tira i whai wāhi ki ngā mahi, i tae ake hoki ki ngā hui, i tiri kōrero, whakaaro hoki ki ngā mahi, me te whanaketanga o Te Rautaki Māori o Kāinga Ora. Nā ā koutou mōhiotanga nui, wheako hoki i tārei tēnei tuhinga, ā, ko te tūmanako ka noho ngā whānau Māori puta noa i te motu ki te katokato i ngā hua.

E kore e mutu ngā mihi ki tēnā, ki tēnā o koutou, kei ngā rangatira – tēnā koutou katoa.

Ko ngā rōpū me ngā tāngata takitahi i whai wāhi ki ngā tira e toru, ko ēnei:

He kanohi nō ngā/Kaihautū ā-iwi

Ingoa	Iwi	Rōpū	Tūranga	Huitopa	Hui 1	Hui 2	Hui 3	Hui 4
Amiria Tomoana	Te Puna Wai	Te Puna Wai Working Group					●	
Anahera Rawiri	Ngāti Whātua	Ngāti Whātua Ōrākei	Head of Culture and External Relations	●			●	
Andrew Crocker	Ngāti Whātua Ōrākei Whai Rawa Limited	Ngāti Whātua Ōrākei	CE, Ngāti Whātua Ōrākei Whai Rawa Limited	●				
Brennan Rigby	Representative of Te Rūnanga-Ā-Iwi-Ō-Ngāpuhi	Te Rūnanga ā Iwi o Ngāpuhi	Mātanga mō te kaupapa					●
Blandina Diamond	Ngāti Tūwharetoa and Ngāpuhi	Tūwharetoa Settlement Trust	Kaiwhakatāhuhu Rautaki Kāinga	●	●	●	●	
Clayton Wiki	Te Rarawa	Te Rūnanga o Te Rarawa			●	●	●	
Danielle Keil	Ngāti Kahungunu Iwi	Ngāti Kahungunu Iwi Incorporated	Kairuruku Kaupapa Motuhake				●	
Geraldine Baker	Ngāpuhi/Whangaroa/Ngāti Toa Rangatira/Moriori	Kahukuraariki Trust/Matauri X Incorporation	Kaiwhakahaere Matua, Heamanar	●		●	●	
Greg Stebbing	Ngāti Tūwharetoa	Tūwharetoa Settlement Trust	Kaiwhakahaere Matua			●	●	
Huia Puketapu	Te Ati Awa ki Te Upoko Ngāti Ruapani Ngāi Tūhoe	Taranaki Whānau (PNBST) Trust - Trustee						●
Jason Mareroa	Te Whakatōhea	NRAI/ICF	Kanohi ā-Iwi			●	●	
Katarina Hina	Ngā Wairiki, Ngāti Apa, Te Ātihaunui-a-Pāpāangi	Te Rūnanga o Ngā Wairiki Ngāti Apa	Kaiwhakakaupapa-Strategic Lead				●	

Ingoa	Iwi	Rōpū	Tūranga	Hui				
				Huitopa	1	2	3	4
Kemp Dryden	Ngāti Rangī	Te Kumete o Paerangi (Ngāti Rangī Commercial arm)	Kaihautū				●	
Leighton Horner	Te Āti Awa	Te Rōpū Mahi o Te Puna					●	
Lewis Ratapu	Rongomaiwahine, Ngāti Kahungunu	Tātau o Te Wairoa Trust	Kaiwhakahaere Matua	●			●	
Marama Puketapu	Te Āti Awa	Te Puna Working Group					●	
Maramena Vercoe	Ngāti Manawa	Te Rūnanga o Ngāti Manawa	Tāhuhu Rangapū				●	
Murray Painting	Ngāpuhi	Te Kaunihera Māori o Aotearoa			●	●		
Nicole Anderson	Ngāpuhi	Te Rūnanga-Ā-Iwi-Ō-Ngāpuhi			●	●	●	
Nireaha Pirika	Te Arawa	Ngāti Uenukukopako Iwi Trust	Heamana		●	●		
Oriana Paewai	Rangitāne, Raukawa ki te Tonga, Kauwhata	Rangitāne o Tamaki nui a Rua	Kaiwhakahaere Matua		●			
Paaniora Matatahi	Waikato-Tainui	Ngaa Rangatahi a Iwi	Heamana Tuarua	●	●	●	●	●
Raymon Ashby	Ngāpuhi, Ngāti Kahu	Te Hau Ora o Ngāpuhi					●	
Steven Sanson	Ngāpuhi, Te Rarawa	Te Hau Ora o Ngāpuhi			●	●	●	
Tammy Tauroa				●			●	
Te Rau Allen	Ngāpuhi	Te Rūnanga-Ā-Iwi-Ō-Ngāpuhi	Heamana Tuarua				●	

Ingoa	Iwi	Rōpū	Tūranga	Hui				
				Huitopa	1	2	3	4
Te Taru White	Te Arawa Ngāti Pīkiao, Tainui Ngāti Mahanga, Ngāti Porou Te Whānau-a-Ruataupare	Te Tatau o Te Arawa	Heamana	●	●	●	●	●
Tomairangi Mareikura	Ngāti Rangī	Te Kumete o Paerangi (Ngāti Rangī Commercial arm)	Heamana				●	

Māori housing experts

Ingoa	Iwi	Rōpū	Hui				
			Huitopa	1	2	3	4
Brett Ellison	Ngāi Tahu	Mātanga kāinga noho Māori for Te Waipounamu	●	●	●	●	●
Materoa Mar	Ngāti Porou, Ngāti Whātua, Ngāpuhi	Te Tihi o Ruahine Whānau Ora Alliance Charitable Trust	●	●	●		
Ngarimu Blair	Ngāti Whātua	Mātanga kāinga noho Māori		●	●		
Nuk Korako	Ngāi Tahu	Te Putake Ltd	●	●	●	●	●
Perry Royal	Ngāi Tahu	Te Putake Ltd	●	●	●	●	
Peter Jefferies	Ngāti Raukawa	Building Houses for Māori	●	●		●	
Phillippa Howden-Chapman		Mātanga Kāinga Noho			●		
Rau Hosking	Ngāti Hau, Ngāpuhi	Te Matapihi	●	●		●	
Rito Basil Tapuke	Te Atiawa, Ngāti Mutunga, Taranaki Tūturu, Ngāti Tama and Ngāti Pāoa	Mātanga kāinga noho Māori	●	●	●	●	●

Ingoa	Iwi	Rōpū	Huitopa	Hui 1	Hui 2	Hui 3	Hui 4
Robin Hapi		Mātanga kāinga noho Māori		●			
Sarah Isaac	Ngātimanawa, Ngāiterangi, Tūhoe				●	●	
Tiny Deanes		Visions of a Helping Hand	●	●	●	●	
Toa Faneva		Te Rūnanga o Whaingaroa	●	●			
Victoria Kingi	Nga Pōtiki, Ngāi Te Rangi, Te Arawa, Ngāti Porou, Ngāi Tahu	Mātanga kāinga noho Māori			●		
Wayne Knox		Te Matapihi	●	●	●	●	●

Internal and inter-agency tira

Ingoa	Iwi	Rōpū	Huitopa	Hui 1	Hui 2	Hui 3	Hui 4
Christina Chase (nominated by Kararaina Cribb, DCE Māori, Te Tūāpapa Kura Kāinga)	Ngāti Whitikaupeka, Ngāti Tamakōpiri, Ngāti Tūwharetoa	Kaiwhakahaere Hōtaka, Te Tūāpapa Kura Kāinga		●		●	
David Durie		Kaiwhakahaere, Horanga Kāinga Noho Tautoko, Kāinga Ora		●	●	●	
Elizabeth Richards (he mea whakaingoa nā Kararaina Cribb, DCE Māori, Te Tūāpapa Kura Kāinga)		Kaiāki, Te Tūāpapa Kura Kāinga	●	●			

Ingoa	Iwi	Rōpū	Huitopa	Hui 1	Hui 2	Hui 3	Hui 4
Emma Ferguson (he mea whakaingoa nā Janna Campbell, Principal Advisor Strategy & Investment, Kāinga Ora)		Kaitohutohu Mātāmua, Rautaki, Haumitanga hoki, Kāinga Ora	●	●	●	●	
George Mackey (he mea whakaingoa nā Karen McGuiness, DCE Partnership Investments, Te Puni Kōkiri)		Kaiwhakahaere Tārewa, Statutory Entity Monitoring, Te Puni Kōkiri	●			●	
Kararaina Cribb	Ngāti Porou, Ngāpuhi, Ngāti Kauwhata	Tāhuhu Rangapū tuarua Māori, Te Tūāpapa Kura Kāinga	●			●	
Manaia King (he mea whakaingoa nā Marama Edwards, DCE Māori Communities and Partnerships, Ministry of Social Development)		Kaiwhakahaere Matua, Ngā Kōtuitanga Māori me ngā Hōtaka, Te Manatū Whakahiato Ora	●			●	
Piripi Winiata (he mea whakaingoa nā Kararaina Cribb, DCE Māori, Te Tūāpapa Kura Kāinga)		Kaitohutohu Mātāmua, Te Tūāpapa Kura Kāinga	●				
Taina Jones		Kaihautū ā-Rohe ki te Raki, Kāinga Ora	●		●	●	

Ingoa	Iwi	Rōpū	Huitopa	Hui 1	Hui 2	Hui 3	Hui 4
Te Ariki Pihama	Ngāti Koroki Kahukura, Ngāti Ruanui, Ngāti Māhanga	Ringa Raupā Deputy Chief Executive Māori, Kāinga Ora	●	●	●	●	
Whiti Turner (<i>he mea whakaingoa nā Kararaina Cribb, DCE Māori, Te Tūāpapa Kura Kāinga</i>)	Ngāi Te Rangi, Ngāti Kahungunu ki te Wairoa	Kaiwhakahaere Kaupapa Here, Te Tūāpapa Kura Kāinga	●				

