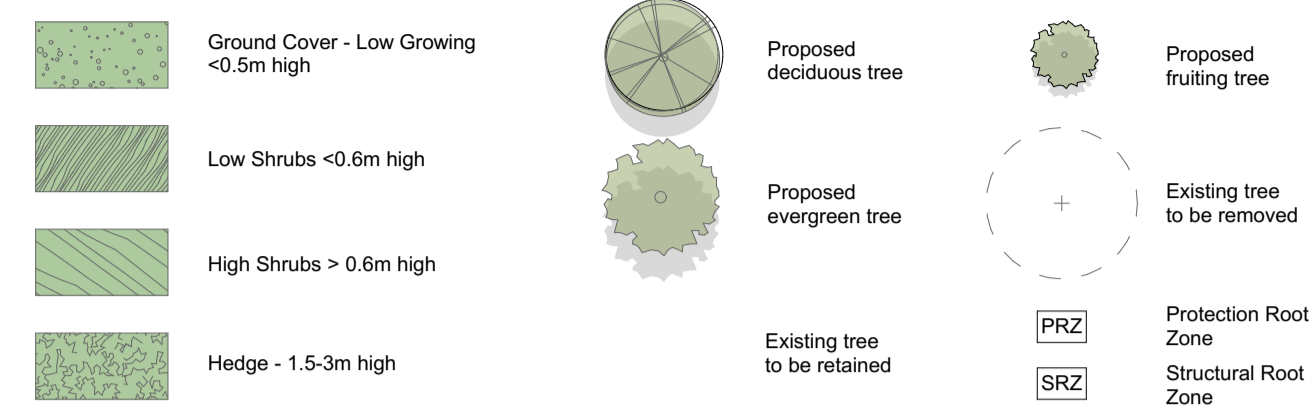
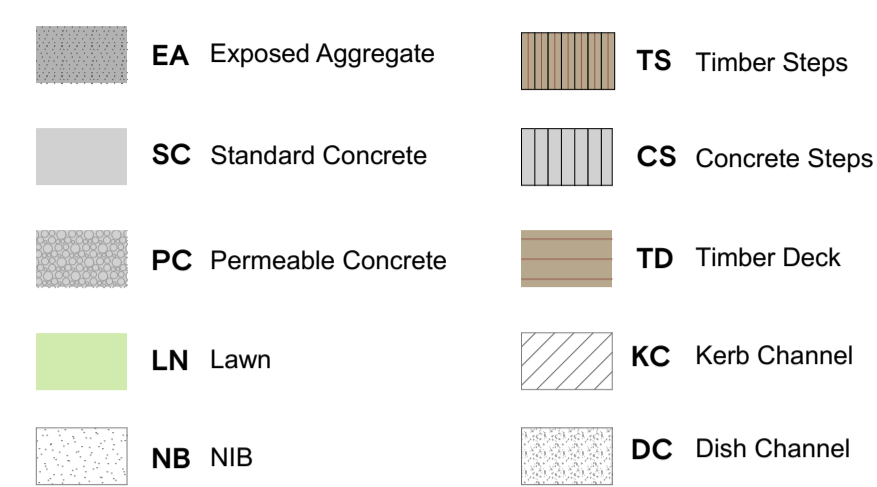


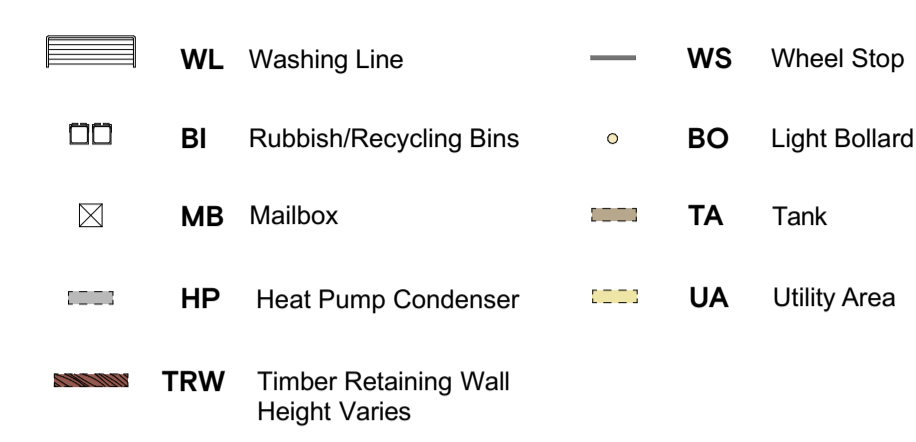
Planting Legend



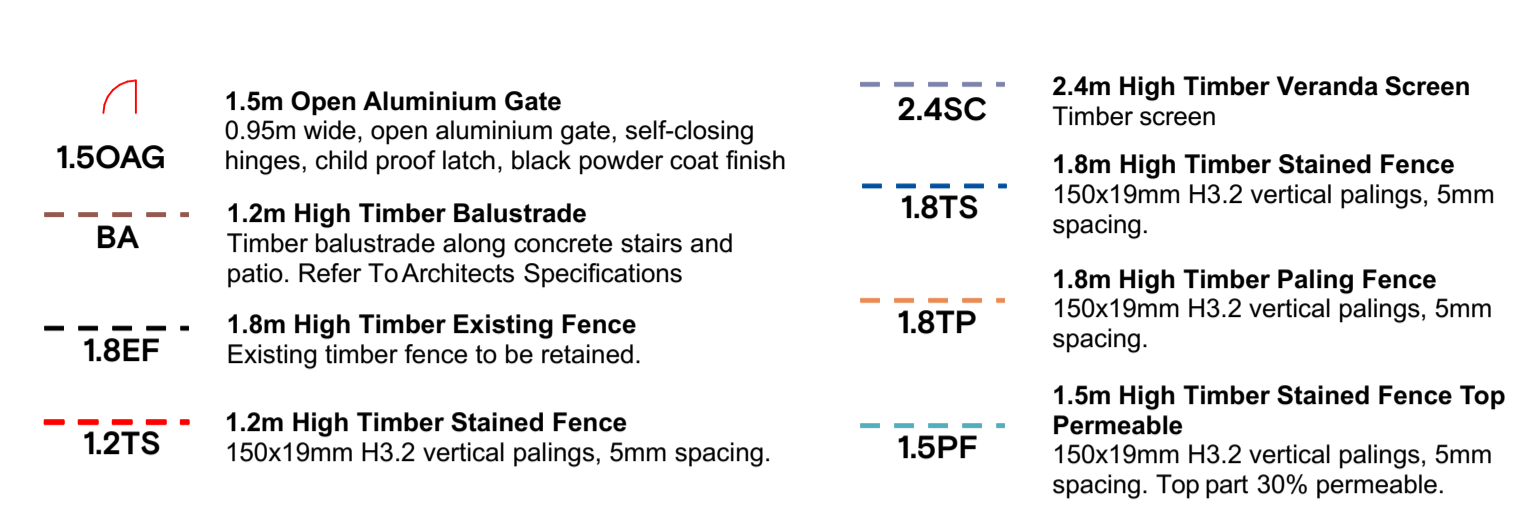
Ground Paving Legend



Services Legend



Fence Legend



Rev	Date	Notes
F	30/11/2022	Resource Consent
E	29/11/2022	Resource Consent
D	24/11/2022	Resource Consent
C	23/11/2022	Resource Consent
B	21/11/2022	Resource Consent
A	8/11/2022	Resource Consent

COPYRIGHT
 These documents may not be copied without prior permission from the copyright holder.

DO NOT SCALE OFF THESE DRAWINGS
 Before commencing work, confirm dimensions, heights, and levels are refer any discrepancy to the contract administrator for clarification.



Project
Kāinga Ora Development of 16-20 Tasman Ave, Mount Albert



Consultants
 Surveyor
 Geotechnical Engineer
 Environmental Engineer
 Civil Engineer
 Structural Engineer
 Landscape Architect
 Framing Consultant

**Hall Surveying
 Tonkin + Taylor
 Tonkin + Taylor
 Maven
 Fraser Thomas
 Context
 Carters**

Title
Landscape GA

Issued For
Resource Consent

Scale
1:100 @ A1



Project no.
21156

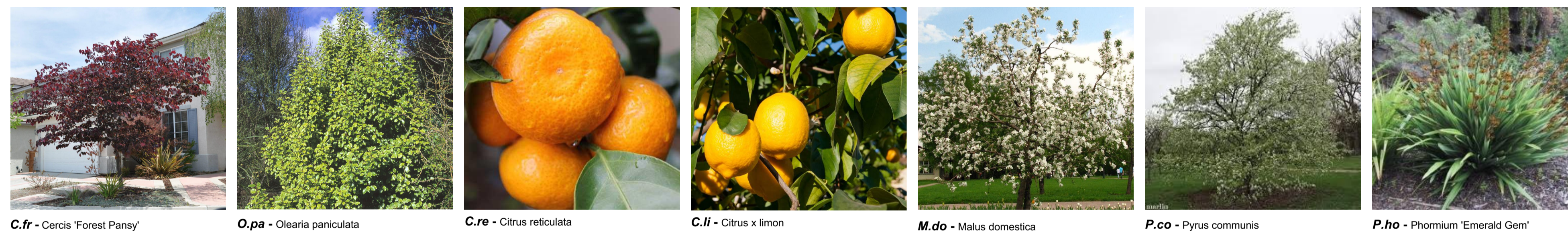
Drawing no. Velocity no. Rev.
L01800 22V010 F

16 -20 Tasman Ave, Mount Albert - Plant Schedule							
CODE	BOTANICAL NAME	COMMON NAME	GRADE (L)	SPACING (m) C-C	PLANT % MIX	PLANT NO:	NOTES
Trees - Deciduous							
C.fr	<i>Cercis canadensis</i> 'Forest Pansy'	Forest Pansy	45L	as shown		2	Driveway Entrance & Common space
				TOTAL		2	
Trees - Evergreen							
O.pa	<i>Olearia paniculata</i>	akiraho golden ake ake	6L	as shown		2	Common Space & Lot 1
				TOTAL		2	
Trees - Fruit							
C.re	<i>Citrus reticulata</i>	mandarin tree	12L	as shown		5	1x Per lots
C.li	<i>Citrus x limon</i>	lemon tree	12L	as shown		5	1x Per lots
P.co	<i>Pyrus communis</i>	pear tree	12L	as shown		1	Lot 1
M.do	<i>Malus domestica</i>	apple tree	12L	as shown		2	Lot 2 and 3
				TOTAL		13	
HE: Hedges 1.5m - 3m high Total Area Planted (m2) 50							
C.gg	<i>Corokia Geentys Green</i>	corokia	5L	1	100%	58	Lot 1,2 5 & Common Area
				TOTAL	100%	58	
HS: High Shrubs >0.6m high Total Area Planted (m2) 63							
D.gr	<i>Dietes grandiflora</i>	wild iris	1.5L	0.8	32%	36	Common Area, Lot 3, 5
L.lo	<i>Lomandra longifolia</i> 'Tankia'	tankia	1.9L	0.8	33%	38	All Lots
H.wm	<i>Hebe Wiri Mist</i>	hebe	2.5L	0.8	35%	40	Front Entrance of Lot 3,4,5
P.ho	<i>Phormium 'Emerald Gem'</i>	dwarf mountain flax	2.5L	as shown		1	Landscape strip at Carpark
				TOTAL	100%	115	
LS: Low Shrubs <0.6m high Total Area Planted (m2) 85							
L.mu	<i>Liriope muscari</i> 'Royal Purple'	lily turf	1L	0.8	53%	81	All Lots & Common Area
L.pe	<i>Libertia peregrinans</i>	creeping iris	1.5L	0.8	47%	72	All Lots & Common Area
				TOTAL	100%	153	
GC: Groundcovers Total Area Planted (m2) 4							
Lo.a	<i>Lobelia angulata</i>	panakenake	1L	0.8	100%	7	Lot 1 & 2
				TOTAL	100%	7	
LW: Lawn Total Area Planted (m2) 170							
Notes:							
1. All planting areas to be prepared with 300mm topsoil min. depth and mulched with 100mm depth of mulch, min. 75mm when settled. Refer to drawings and specification. 2. All tree pits to be prepared in accordance with drawings and specification. 3. All specimen trees to be staked with 2 x timber stakes per tree, painted black, secured with hessian ties - refer to drawings and specification. 4. Trees to have clear stem for lower 2.0m of trunk from ground level to allow for clear line of sight. 5. All planting to be setback 150mm from any path and driveway edges.							

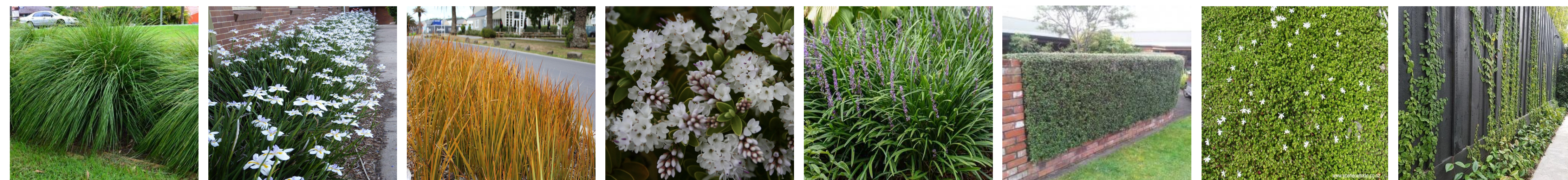
Rev	Date	Notes
F	30/11/2022	Resource Consent
E	29/11/2022	Resource Consent
D	24/11/2022	Resource Consent
C	23/11/2022	Resource Consent
B	21/11/2022	Resource Consent
A	8/11/2022	Resource Consent

COPYRIGHT
 These documents may not be copied without prior permission from the copyright holder.

DO NOT SCALE OFF THESE DRAWINGS
 Before commencing work, confirm dimensions, heights, and levels are refer any discrepancy to the contract administrator for clarification.



C.fr - Cercis 'Forest Pansy' O.pa - Olearia paniculata C.re - Citrus reticulata C.li - Citrus x limon M.do - Malus domestica P.co - Pyrus communis P.ho - Phormium 'Emerald Gem'



L.lo - Lomandra longifolia D.gr - Dietes grandiflora L.pe - Libertia peregrinans H.wm - Hebe wiri mist L.mu- Liriope muscari 'Royal Purple' C.gg - Corokia 'Geenty's Green' Lo.a - Lobelia angulata F.pu - Ficus pumila

Project
Kāinga Ora Development of 16-20 Tasman Ave, Mount Albert



Consultants
 Surveyor
 Geotechnical Engineer
 Environmental Engineer
 Civil Engineer
 Structural Engineer
 Landscape Architect
 Framing Consultant

Hall Surveying
Tonkin + Taylor
Tonkin + Taylor
Maven
Fraser Thomas
Context
Carters

Title
Planting Schedule

Issued For
Resource Consent

Scale
NTS

Project no.
21156

Drawing no.	Velocity no.	Rev.
L01810	22V010	F